

Letter tab in 4D Embroidery by Jan Henning

Open your software and click on the letter tab. Click on “Multi-Color” and then click on the camera.

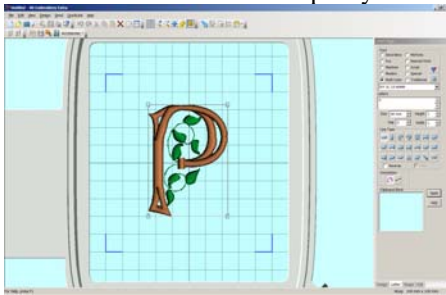
If you touch the down arrow on the keyboard, the next font will be selected and you can see the size of the fonts as you search through them. Just keep pressing the down arrow and when you find one you like, touch OK.



The box is around Ivy 2C 15-60mm. This means that it is a 2 Color font and the size range is 15 to 60mm in height. The height refers to the Capital letter. I'm going to click on Ok.

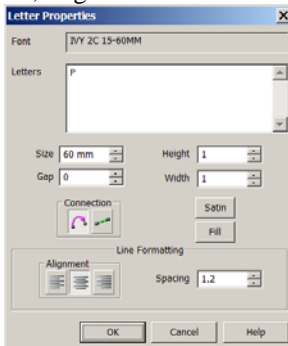
I'm going to type the letter P and make the size 60 which is the maximum shown for that font and click on apply.

On the screen you can move the P so that the bottom sits on a bottom grid line and easily see that it takes up 6 grids. Each grid is 10mm. But, when I look at this letter on the screen it seems to be about 63mm, so I don't understand the discrepancy sometimes.



Now that we have it on the screen, you should see an outline box around the letter and hollow boxes on the corners. This means it is in the resize mode. If you change the size, the stitches will be added or subtracted to the design. You could just drag up on one of those hollow boxes on the upper corners or drag down on the bottom outline boxes to size that way, but you won't know exactly the size you are getting.

So, “right click” on the letter and you will get a pop up screen and this pop screen will appear.



If we made a type error in the letter, can change it.

We can change the size or the height and/or width. If the size is 60mm and we change the “height and width” to 1.5, then it will be 1 and a half times bigger than it was before the change but done proportionately since we changed the height and the width. If we changed it to 2, it would be 2 times the size it was before. Now it is a bit bigger than 90mm. If I typed in 90 in the size window, it would be the same as me changing the height and width by 1 ½ X 60.

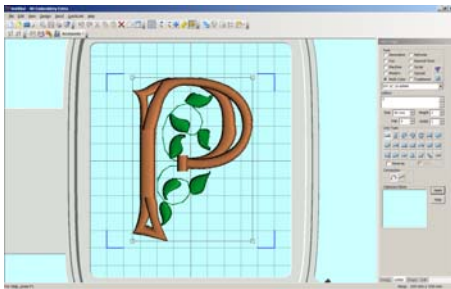
This is a satin stitched font as you can easily see that, so if we wanted to change that, we have to click on the word “satin” and get 12 choices to make a change.

If we had several words or letters, we could change the gap in between each letter. If we had several lines of lettering, we could change the spacing in between the lines.

If we had several lines of words, we could left align them, center align them or right align them.

We can also change the connection between the letters to running stitch if we wanted. This would make tiny running stitches between each letter instead of a jump stitch.

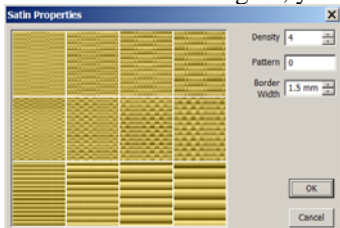
We only have one letter, so let’s just change the “size” for now because you want it bigger. We could type in 90mm and see what happens when we click on OK.



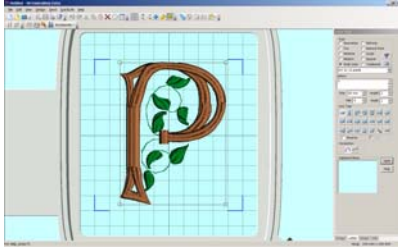
Now, you can see that it takes up almost the 4X4” design area. But we need to pay attention to those satin stitches. Look how wide they are on the straight part of the P.

We know our machine will struggle with looping if those satin stitches are too wide. I generally don’t want mine more than 9mm in width. I can tell by looking at the grid lines that the area I was talking about doesn’t completely fill the grid line so I think we are okay. But, if they were too wide, then we would have to click on “satin”. Right click on the letter again and click on “satin”. Notice we can change the density or the pattern or if it were a font with a border, we could change the width of the border. (There was a glitch in the program for the border width and I don’t think it’s been fixed yet.)

If we click on 1 through 8, you can easily see it’s more of a fill stitch. Nine through 12 are columns.



Let’s click on 4 and the pattern will change to 4 in that window and click on Ok and take a look at what the letter looks like now. Yuk!! Let’s right click again on the letter and choose “satin” and change to #12. It split it into columns. I think the satin stitch looks the best so we will change back to pattern 0.



But, I also want you to know how to measure that satin stitch. As long as I stay on the letter tab, I can make changes, but once I touch the edit or design tab, I can't make those changes any more like we did.

Click on the "edit" tab and then look at the top right side and touch the ? Icon. This lets us measure the widest part of the satin stitch. Once you touch it, a measure attaches to the cursor and if you left click at the left side of a wide satin stitch and hold that cursor down and drag it to the right side and click, it will tell you the size. I did it on different areas and got from 8.3 to 8.6, so we are okay.

To get rid of the measure, right click somewhere on the screen. If you go back to the letter screen, you will see it now has black handles and we can no longer do the right click to make changes.

You must go to the design page to make it an actual design.

Let's choose a font that we know is a filled type of font, so you can see the difference in making the fill changes.

I chose the decorative category and you can easily see that the 2nd font is a fill type font and the others are satin stitch type of font. I have chosen Bremen as shown at the bottom left and on the right side in the first window. Notice that the UC means upper case letters.



Let's "right click" on the lettering on the screen and click on the word "fill". You have many choices of fill stitches. Choose one and then view it and if you don't like it, choose another. As long as you stay on the letter page, you can make these changes. Click on the down arrow on the fill properties pop up to see all of these categories of fill types and choose whatever you like. See the difference in the pictures.

