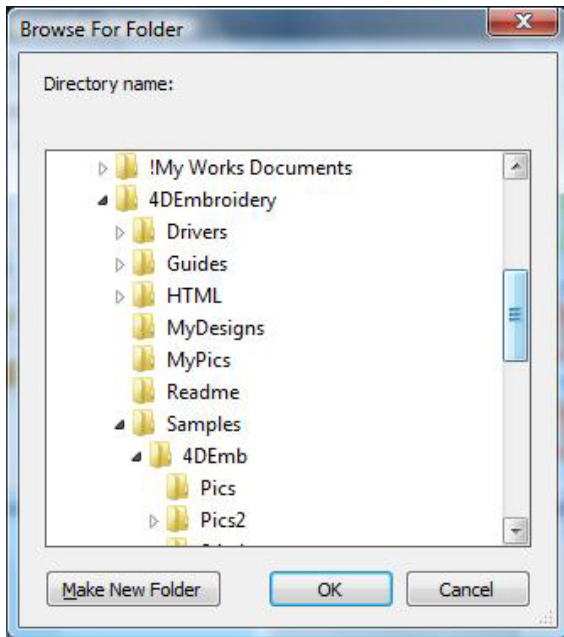


## Endless design instruction *by Jan Henning*

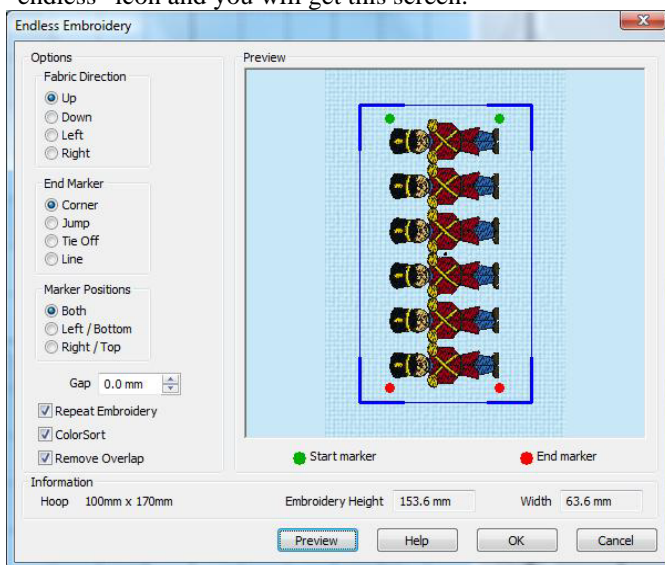
Open your program and choose the Endless hoop in vertical.

We will use a design everyone has with their program. Find the Sample folder under your program. Click on “view” and click on the browse buttons to locate the software program you have and click on the symbol in front of the folder to open it and reveal the “sample” folder.



Use the scroll bar to see the “stitch2” folder and click on it to reveal the designs. Click on the “toys” folder and choose the toy soldier. Close the “design view” screen.

Let’s rotate the design so it goes horizontal and we can use it as a border. Touch the “rotate 90” icon on the toolbar. Touch the mirror tool on the left side of the design so he faces to the right side. Touch the “endless” icon and you will get this screen.

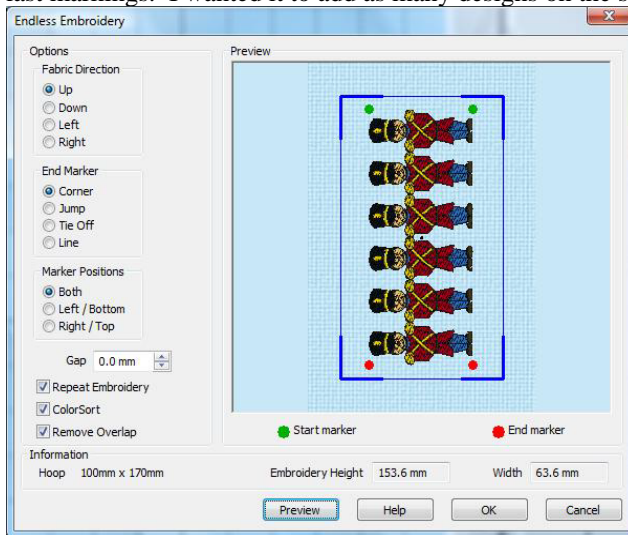


I left the default settings. So, let's talk about that. The UP choice means the beginning alignment stitches will be at the upper part of the design and notice the green dots at the top of the design.

You would start the design at the top part of the fabric and when the stitch out is done, you pull the fabric backwards to align the next stitch out.

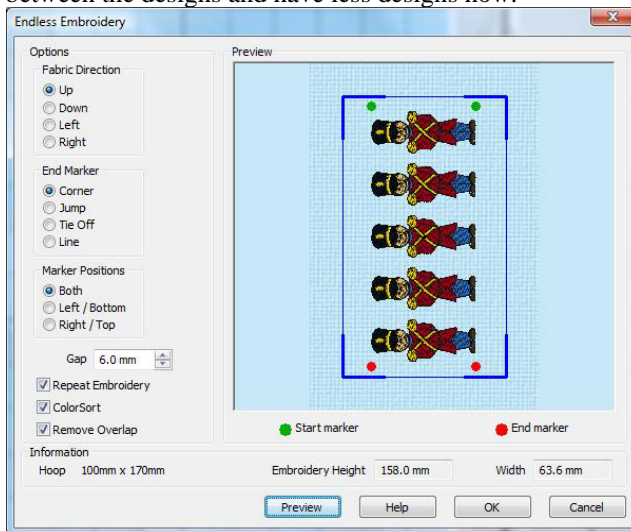
If you choose "down", the beginning alignment stitches will be at the bottom of the design. That would mean that you would hoop the end closest to you first and then pull the fabric forward to align the next stitch out. The green dots would show on the bottom and the red dots on the top.

The bottom markings are red. The design will stitch out with the first markings, then the designs, then the last markings. I wanted it to add as many designs on the screen as it could for this size of hoop.



Right now, there is no gap and I don't like the way it looks so I'm going to change the gap so that I have space in between the designs.

I used the up arrow in the gap window and increased the gap to 6.0 and notice that we have space in between the designs and have less designs now.



The gap of 6mm will be divided in half at the top and bottom of the design. When the next design is

stitched out, there will be alignment stitches and then 3mm of space before the design stitches out. So the spacing between the first design and the 2<sup>nd</sup> stitch out will still have the same gap between all the designs. It's up to you how much gap you want in- between the designs.

At the end of the design, it will add the end alignment stitches 3mm from the bottom of the design.

If you chose left or right, then the fabric would be hooped horizontally and you would be matching the alignment stitches from the sides instead of top or bottom. Touch "preview" to see the results with each choice you make.

I much prefer the Corner markers. They seem to stay in better for alignment. It will actually make two little corner stitches on each corner and when you match up the needle with the next stitch out, you put the needle into the corner where the two stitches meet

If you choose "left bottom", the stitches will be on the left side. If you choose "right top", the stitches would be on the right side. These are used when the fabric is going horizontally.

The color sort is nice because it will do it automatically if checked.

Click on "help" to read further information.

See my file on my website for matching alignment stitches. In the tutorial, the alignment stitches are Xs. That was written before Viking added alignment stitches to our program but the stitch out would be done the same way. Instead of the X, you will have the corner alignment stitches.

<http://www.sewmuch4retirement.com/tips/stitchoutendlesshoop.htm>