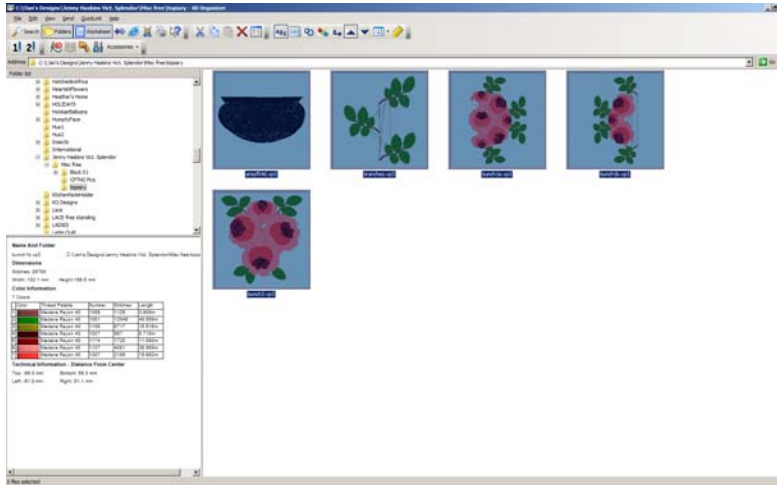


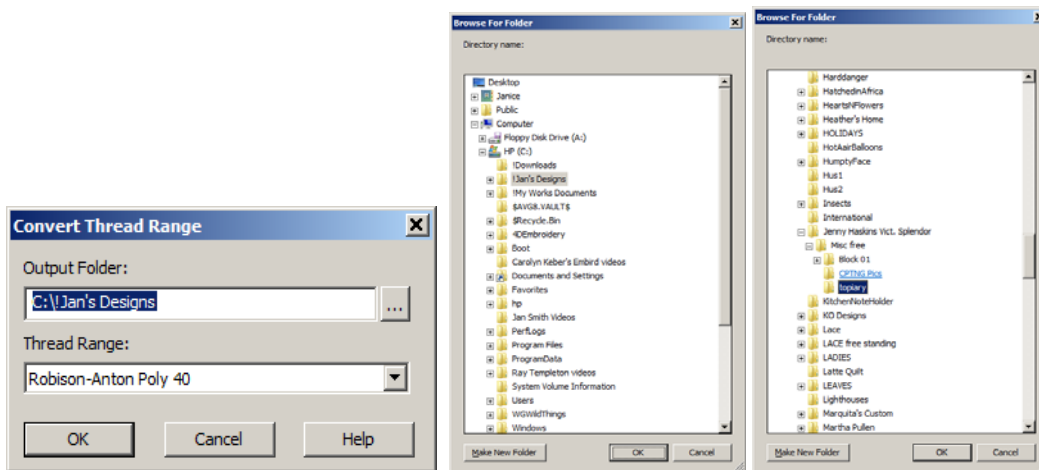
Convert thread range by Janice Henning

Sometimes you get a set of designs that used a brand of thread that you don't have and you want to convert the whole set to the thread you do have.

Open the Organizer and find the set of designs. This one shows Madeira was used. Note the chosen category. Notice the "worksheet" for that design on the left side.

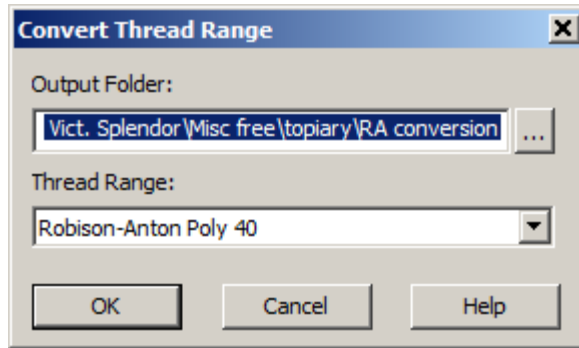
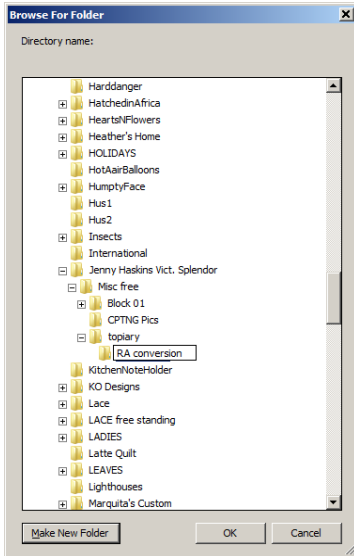


Highlight the designs and click on "file, convert thread range".



Click on the "browse buttons (dots)" to find the folder the designs are already in or click on "create a new folder" to make one just for those converted designs. I'm going to find the folder that the original designs were in and click on it first and then touch the "create new folder" to create a sub folder under that category.

I called the new folder "RA Conversion" (Robinson Anton), but you can see that it's a sub folder under the original folder.



I clicked on Ok and then got this Convert thread range window. I checked the Output file folder to make sure it's correct and then I make sure the correct Thread range is selected and click on OK.

Then on the upper left side of the Organizer, Click on that main folder with the designs and then click on "view, refresh". This refreshed the screen and you should now see a "+" next to the folder meaning it has a sub folder now. Click on the "+" sign in front of the folder to reveal the new folder.

Click on **that** folder to view the newly converted designs.

Click on a design to see the worksheet that reflects the new color range.

