

Safely Remove hardware device.

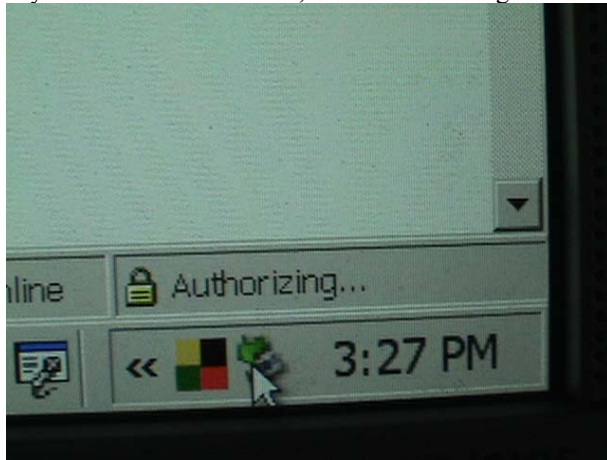
Sharon shared her instructions for changing settings for the “safely remove device” tool.

Here's how to set up your stick so you don't have to go through the Remove Safely routine (your stick needs to be connected to your computer to do this):

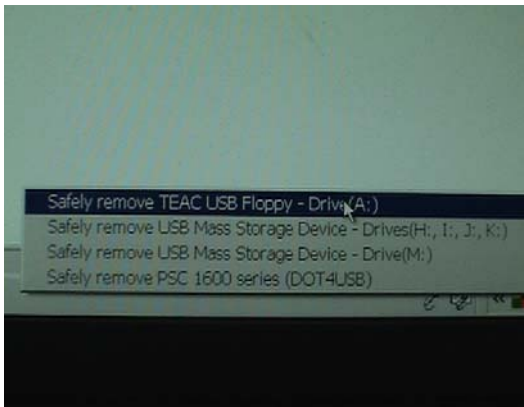
Open up the My Computer screen, right click on your USB Flash drive, select properties, on the dialog box that comes up select the hardware tab at the top, click on your USB Flash Drive (mine says Generic Flash Disk USB Device)select properties on the bottom of the dialog box, on the next dialog box that comes up select the Policies tab on the top, There are 2 options, if you check the top one you can disconnect the device without using the Safe Removal icon, but if the second one is selected you have to use the Safely Remove Hardware icon on the taskbar.

Sharon in Warren, MI

If you choose the other one, then click on the green arrow on the bottom right side of your taskbar.



This screen will appear showing the ports. I have the external floppy drive inserted so it will show the floppy A drive.



I click on that floppy a drive because that's the one I want to remove the device from and this message will appear.

