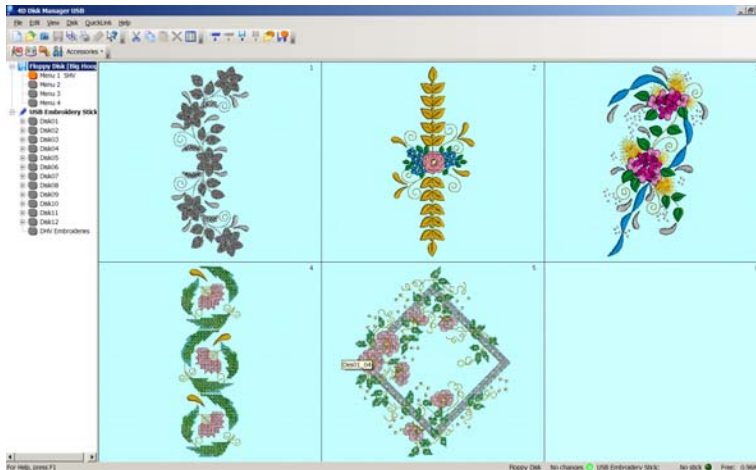


SHV Disks saved to computer using Disk Manager or Organizer.

Disk Manager used to save SHV designs from floppy disk.

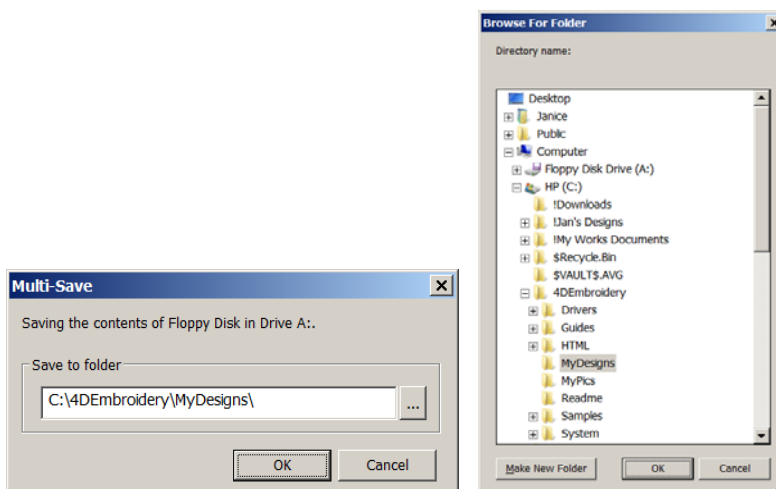
Open **Disk Manager** and then insert the disk in the drive. Click on **“read the disk”** on the toolbar. The designs will appear on the screen.

On the left side of the screen, **click on the “+” in front of the words “floppy disk”** so it will open and reveal the menus on that disk. I only have designs on one menu for the disk I have in the drive.



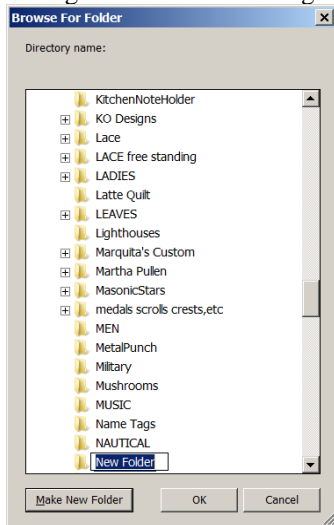
On the top left side of the toolbar, you will see the “multi save” icon which is 3 disks overlapping each other. Click on that and this “multi save” pop up will appear. Notice the **“save to folder”** shows the C drive and then 4D Embroidery and then My designs. So, if you clicked OK, it would save to THAT last folder.

I want mine saved to a special folder under “my designs” so I can find them easier. So, **click on the “Browse buttons” (3 dots)** to see your explorer filing system. I am doing this with 4D Disk Manager. So if you have 3D Disk Manager, it may not have a “new folder” feature. In that case, you need to make a folder ahead of time.

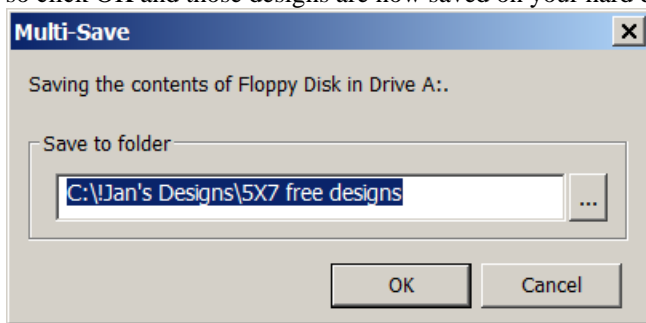


Now you see the Browse for folder and it shows MY filing system and **at the bottom left, it shows “make new folder”**. I have all of my designs under the file called **“Jan’s Designs”**. You may have your categories under the “My Designs” folder listed under 4D Embroidery. So, if you want your new folder,

YOU click on “my Designs” folder. **I am going to click on “Jan’s Designs” because that’s where I want this new folder created to hold these designs and then click on Ok.** Then click on “new folder”. The “new folder” will appear and type the name you want for this folder right on top of those words. I’m calling mine “5X7 free designs” and click OK.



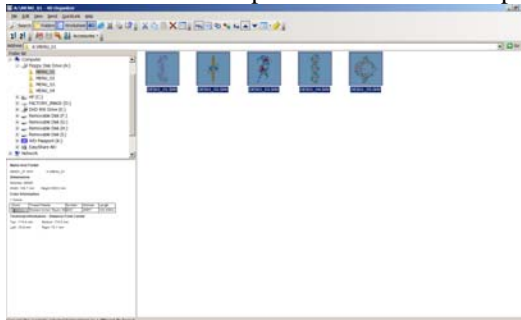
That new folder will be created and this is what you will see now. That is where you want those designs, so click OK and those designs are now saved on your hard drive.



Organizer used to save designs from SHV floppy disk

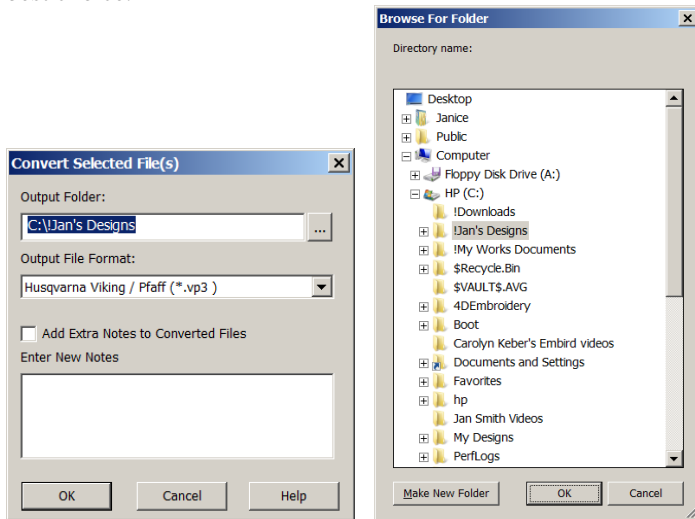
Open Organizer and insert the disk in the floppy drive. Click on the A drive to read the floppy and click on the “plus” in front of the drive to see the menus on the disk.

Click on Menu 1 and it will show what is in that menu. Hold down the control key and the A key at the same time to highlight all of the designs. Once you do that, the “convert” arrow on the toolbar is now active. It’s the double pointed arrow on the top left side.



The convert selected files screen appears. The output file showing on mine is C:/Jan’s Designs. But, I

want those designs in a folder special for them. I am going to click on those 3 dots (browse buttons) so I can make a new folder or find one that I really want those designs in. Notice the output file format is vp3. I can change that if I want by clicking on the down arrow and choosing a different format, but that is the best choice.



The highlighted folder is Jan's Designs. So, I can click on "Make new folder" and make a sub folder under Jan's designs just like I did in Disk Manager. Then click on Ok and the designs will be saved in the new format in the proper folder.