

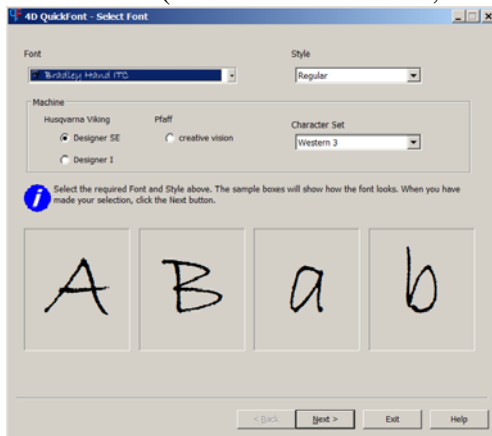
Quick Fonts saved to the stick instead of to the Designer SE *By Jan Henning*

When you only have the CD software that came with the machine, it includes 3D Organizer. If you click on “accessories” on the toolbar, you can use Quick Fonts to create fonts to stitch on the machine. If you send the fonts to the machine and you update the machine later, the update will wipe out the fonts you added. The original fonts that were on the machine will not be wiped out. This Quick Fonts is also part of the 3D and 4D programs. Read how to use these fonts on the DSE on page 4-16 in user’s guide and 4-8 in Handbook.

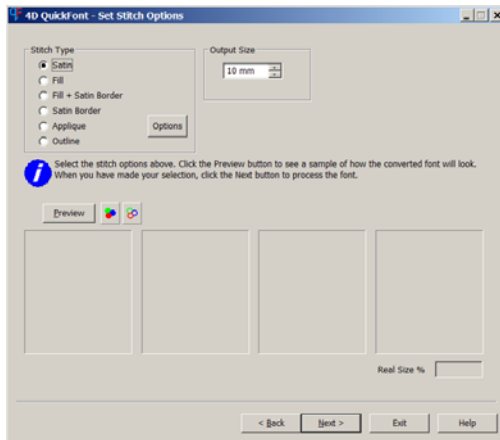
You may want to **send the fonts to the stick** instead and still be able to use them on the machine.

I am assuming that you have already used the Quick Fonts program and you know how to choose the font and decide on the size and the options and the character set, etc.

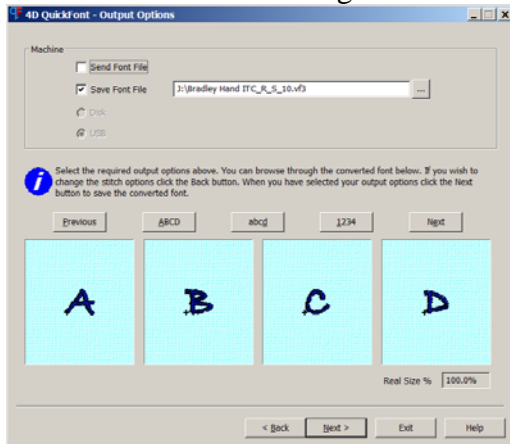
Open the Quick Fonts listed under “Accessories”. I chose Bradley Hand and I chose “regular” style and I chose Western 3 under Character set so I would have more characters. (3D will show “basic, extended and super extended”.)



Click on “next” to see this screen. I chose size 10 and Satin.

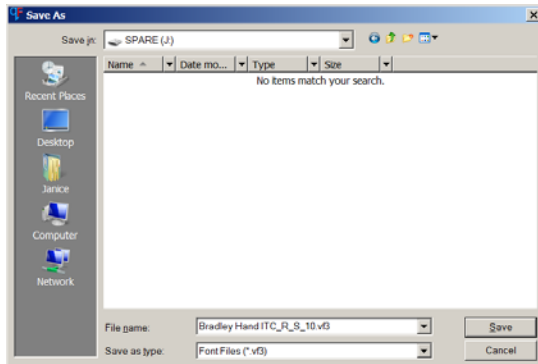


I clicked on “next” and it generates the font and then you see this screen.

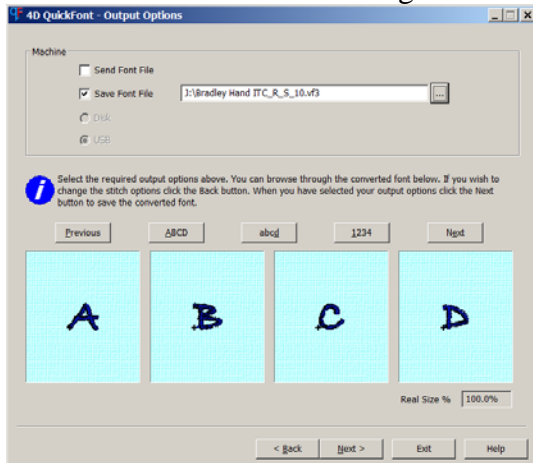


You can send the font to the machine **and/or** save the file where you want it. I want to just save it this time. (If you chose both, the font would be sent to the machine too if it was turned on.)

Click on the 3 dots (browse buttons) to locate the drive that holds the stick. When you double click on that drive, the drive appears in the window and the font name appears in the file name window. R means I chose “regular”, and “S means I chose “satin” in size 10mm. Click on “save”. **Notice the file is vf3**. It is a font file not a design file.

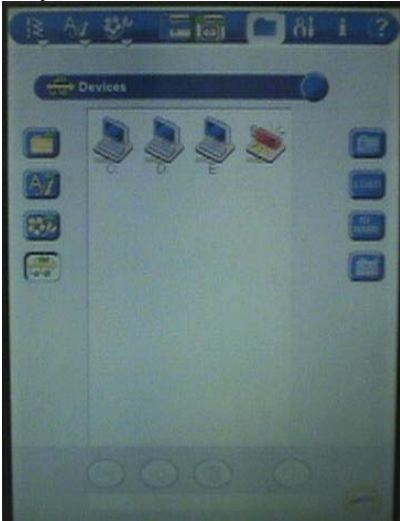


This screen appears and you see the name of the new font in the window and it’s on the J drive which is the drive holding the stick. Click on “next” and “finish”.



Using the font on the DSE

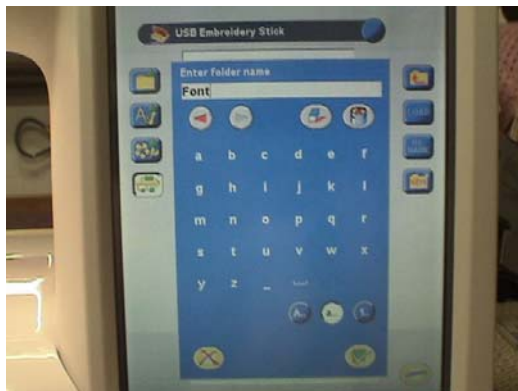
Insert the stick in the machine and touch **"file manager" folder** and select the device icon. Touch **"open"** it to reveal that file. Then touch **"load"** and you use it the same way as if it was on the machine itself.



Deleting a font from the machine and pasting it to the stick.

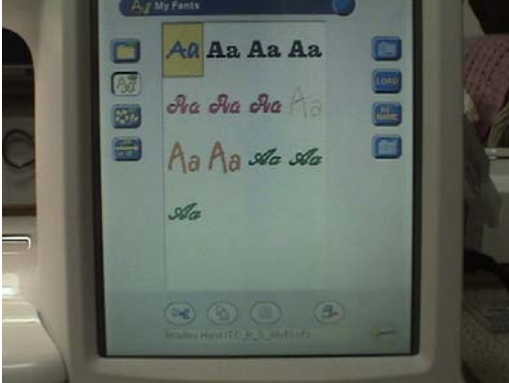
You may have sent some fonts directly to the machine previously and you want to save them to the stick because if you do an update, it will wipe them out. **Let's create a new folder** called **"fonts"** on the stick so we can put all of those fonts into that folder.

Insert the stick in the machine and touch the **"file manager"** and choose the **"devices"** and **touch the stick icon** and **touch "open"**. Touch **"new"** to create a folder to hold the fonts. This screen appears and you touch the letters to create the folder and touch the check to confirm. *(for small letter, touch the small "a" at the bottom.)*

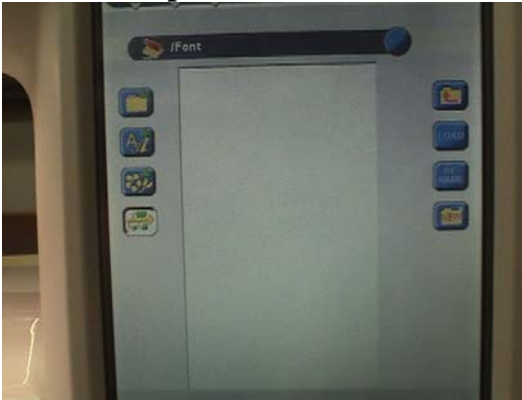


Touch the **A/a** to open the embroidery letters screen.

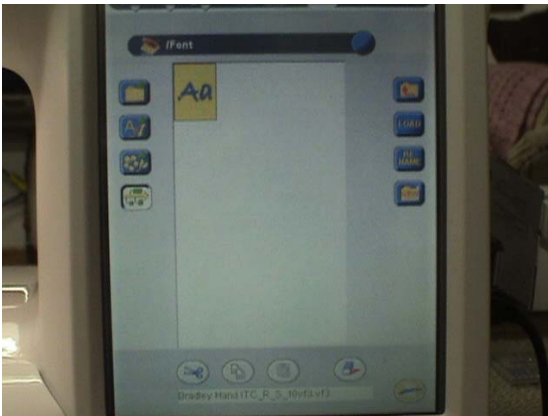
Touch the font you want to remove and the name will appear at the bottom of the screen to make sure it's the one you want. *(The ones that were on there originally will not be erased with an update).* Touch the **“cut (scissors)icon”** and you will notice that the **“paste” icon** will light up.



Touch the **Device Icon** and **choose your stick** and **“open”**. Touch the **“font”** folder and touch **“open”**.



Touch the **“paste icon”** on the bottom of the screen and that font will go into that folder. When you click on that font, the name will appear at the bottom.



If you click on **“A/a” icon**, that font will no longer be there.