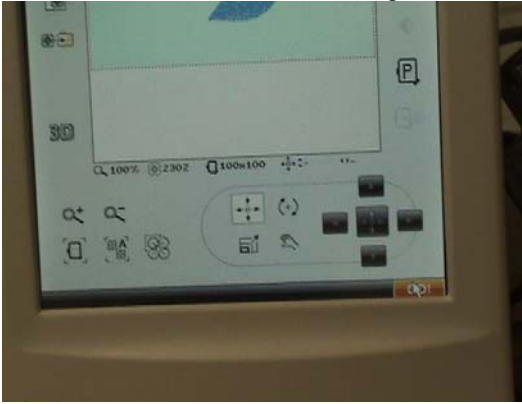


## Positioning arrows to center design on the Diamond *by Janice Henning*

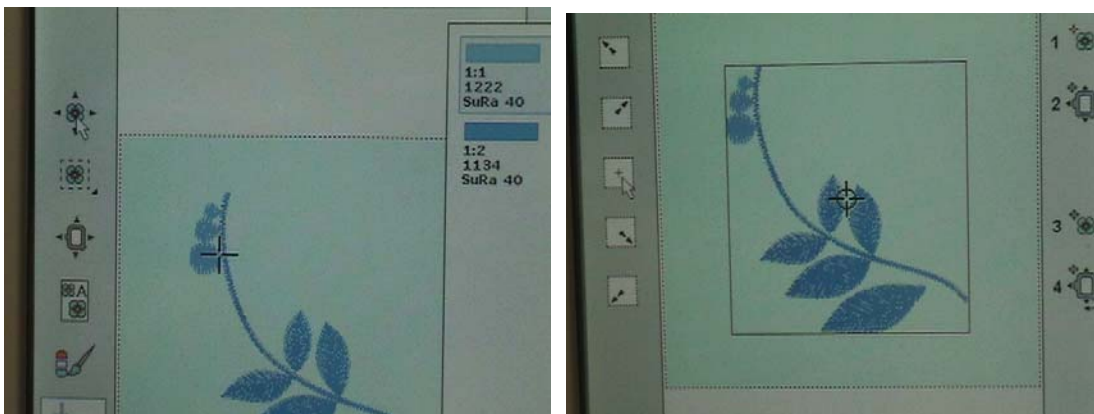
The first screen that comes up when choosing a design is the “**editing**” screen. This is the screen where you can resize or rotate, color, etc.

When you are done editing, touch the “**GO**” icon on the bottom right side of the screen. The hourglass shows that the machine is calculating the stitches in the design so wait for it to disappear.



The “**stitch out**” screen appears and the needle moves to the first stitch of the design. But we can't see if the design is positioned exactly where we want it according to the markings on the fabric or the stabilizer. Notice at the lower right, the positioning arrows are not there.

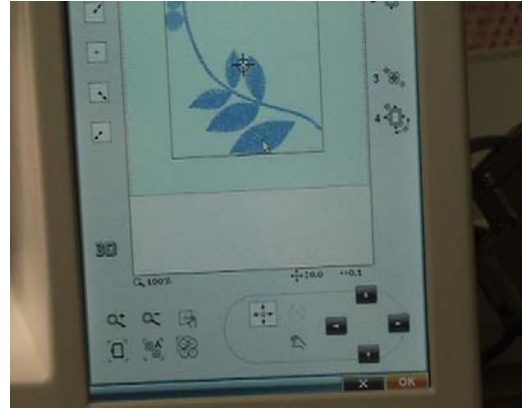
Touch the top left icon (Design Positioning). You will get icons on the screen to help us with positioning. **The middle one will center the design.** The others will show the how far upper left and right and how far lower left and right that the design will take to stitch out.



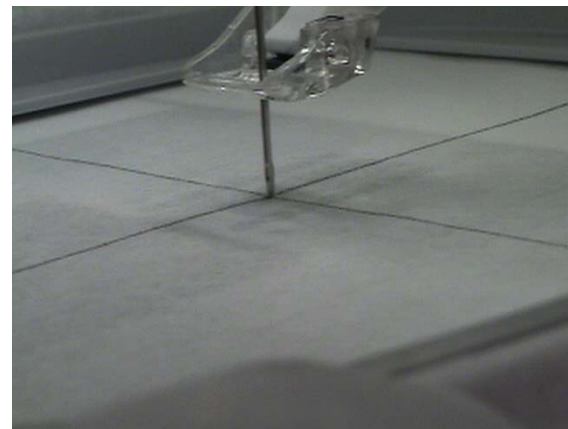
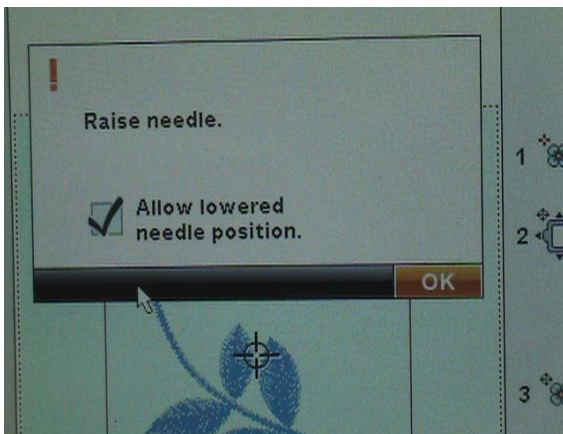
Notice in the picture on the right, that I placed my cursor on the “**center design**” icon. Touching this will move to the center and then we can check our fabric and/or stabilizer to see how close the needle is to the center intersection where the two marking lines cross each other.

Once you touch the Design Positioning icon, the **positioning arrows appear on the**

**lower right side** so you can adjust the position. I lower my needle to see how close I am to the center intersection. Notice the needle is below the intersection but is right on the vertical line so we only need to move the design upward until the needle is right in the center of the intersecting lines. (I am going to use the **non-hooping method** which means only the stabilizer is hooped.) I will adhere the fabric a bit later.



If we lower the needle and touch those arrows on the lower right side, we will get this message below. Just click in the box to allow the lowered needle so you can be more accurate. My needle is below the intersection, so I need to touch the up arrow to move the hoop upward. If the needle was too far to the left, then I would touch the arrow going to the right. **The picture on the lower right shows that I now have the needle exactly in the center.**

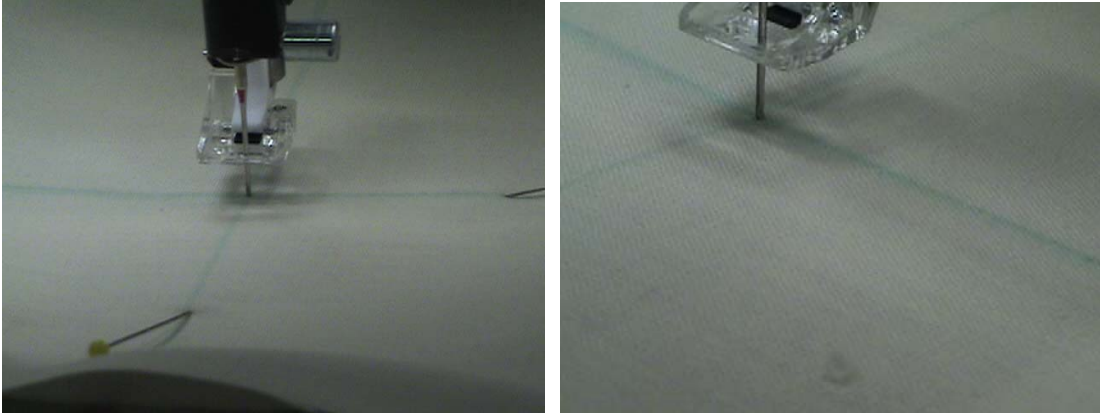


Once you are happy with the needle position, **raise the needle by turning it towards you.** Remove the hoop and lightly spray the stabilizer with the Adhesive spray.

Replace the hoop and slide the marked fabric under the needle so that the center intersection is under the needle. Turn the hand wheel towards you so the needle will go into the fabric right at that intersection and hold it in place while you match up the other markings on the fabric with the markings on the stabilizer. I use a straight pin that I place in the lines and lift the fabric to make sure it aligns with the line on the stabilizer.

Then smooth the fabric out so it is nice and flat and sticks to the stabilizer.

The right side picture shows the fabric already hooped **with** the stabilizer and I used the positioning arrows to make sure the needle went down into the center intersection.



Click on **“Ok”** to close the positioning screen.

**“Touch and hold”** on the baste icon (see arrow pointing to it) and choose to baste around the design and/or around the perimeter of the hoop. Touch **“start”** to baste. After the basting, touch the **“start”** to embroider.

