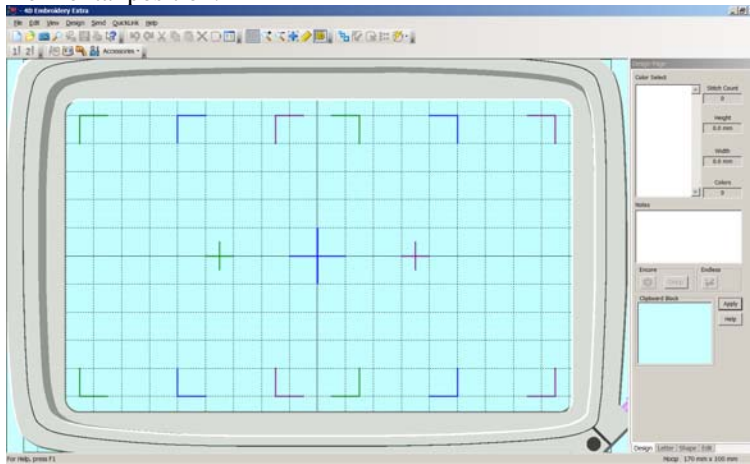


Plus Hoop Tutorial by Janice Henning

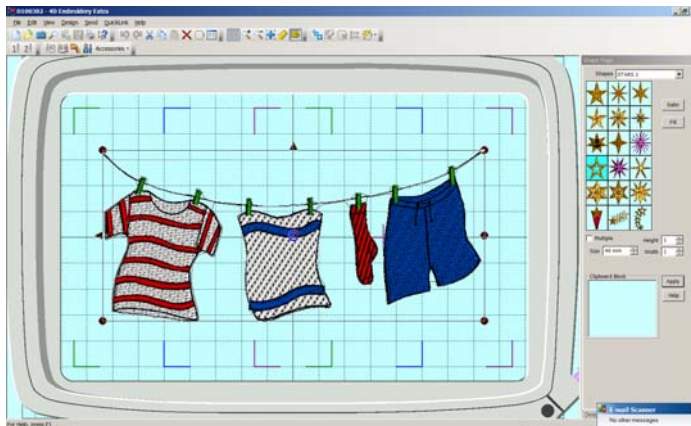
Open your program and click on the Hoop icon and choose the Plus Hoop (100 X 170) and check the Horizontal position.



Notice the 3 positions of the Plus Hoop. The first position starts on the left (top of hoop) and has green corners and that position goes to the next green corners.

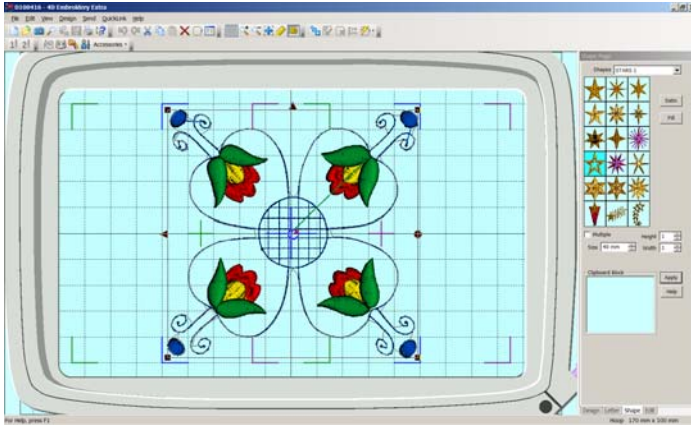
The 2nd position shows the blue corners and the 3rd position shows the purple corners. Notice that they each overlap each other.

If you put a design on the screen, it must fit within the borders of one of those positions. So, let's go to the shapes tab and choose a design so you understand.

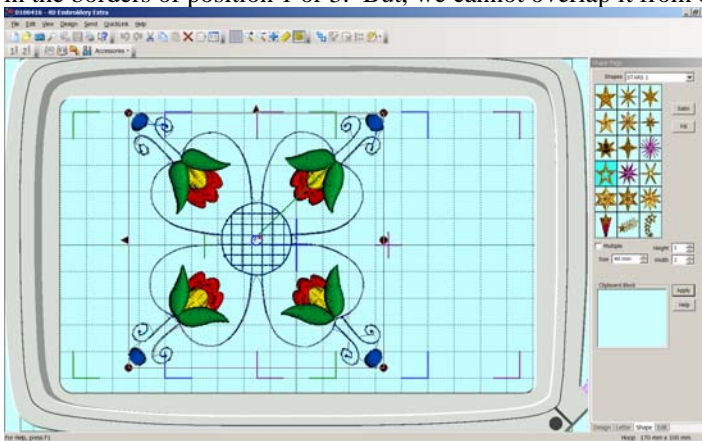


I chose this design from the Designer 1 Sampler disk and you can see that this design spans 3 positions. The program will not split a design so you know you can't use anything wider than 4X4.

I found another design that I know isn't too big and put it on the screen.



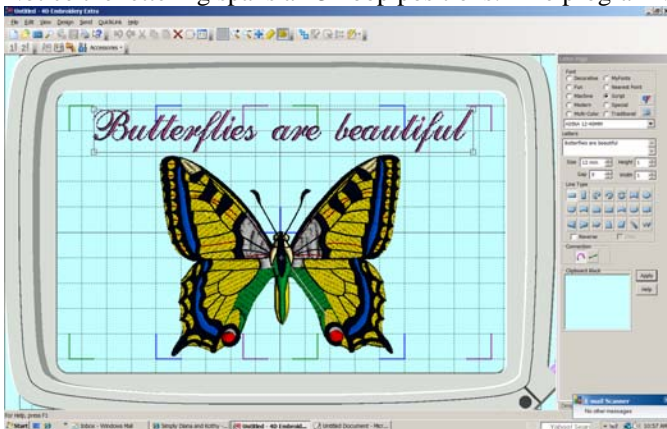
You can see that this one fits fine within the blue borders which is Position 2. We could move it over to fit in the borders of position 1 or 3. But, we cannot overlap it from one position to the next one.



This picture shows that it is overlapping the right side of position 1 beyond the green borders so that won't work. It must be within the borders of any position we wish to place it.

I've chosen the butterfly from the D1 Sampler and I moved it downward on the screen so I could add lettering. I chose the Adina font from the Script category and left the size at the default of 12 so I knew it would fit in the design area.

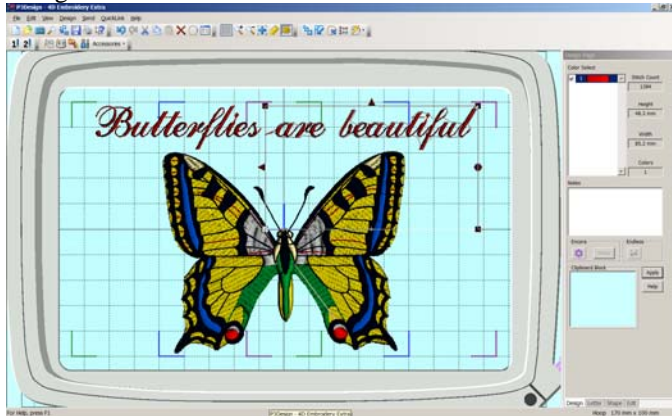
Notice the lettering spans all 3 hoop positions. The program will split the lettering but not a design.



We are happy with the design and we need to go to the Design tab to set this as a complete design. But we need to color sort the lettering so we only have one color.

Click on the lettering and touch the color sort and then change the color to bright red.

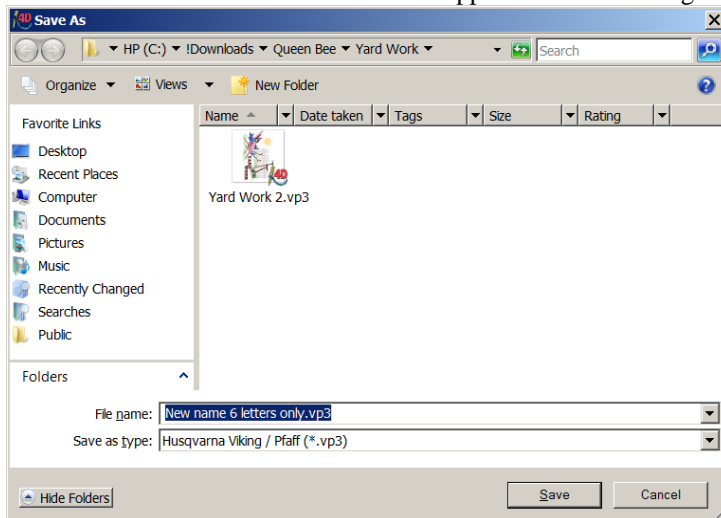
Click on combine. Notice the outline box is around the last part of the design which is P3 and it only covering the words “are beautiful”. Look at the to left side of the title bar and you will see the name is P3 Design.



So, let’s check out to see how it split the design up. Click on the left side of the design and the word “butterfly” is outlined. Notice on the top left, it now says P1 Design. Click in the middle and the whole butterfly design is outlined and the name is P2 Design.

Now we need to save the design. It will save in 3 parts. We can only use 6 letters in the name because each position will add the P1, P2 or P3 to the name.

Click on “save” and the save screen will appear at notice the highlighted words for the name.

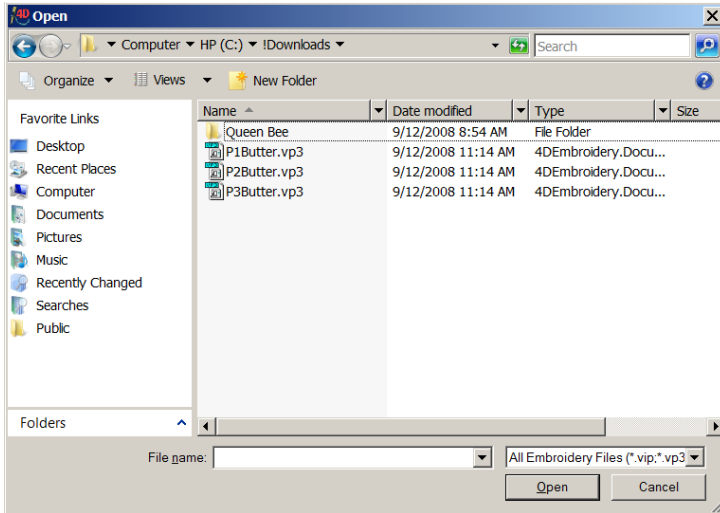


You first have to be careful to locate the correct folder to save this design to so find that folder by clicking at the top on the C drive and find the folder. I am going to save mine to the Download folder so I know where to find it easily. I could always send it to another folder later.

But, now I need to give it a name so I’ll call it “butter” so I only have 6 letters and click on “save”.

Let’s find the files so we can see what they look like. Delete the design off the screen.

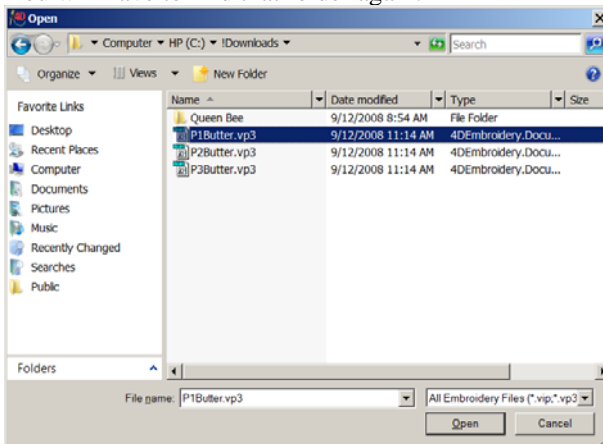
Click on “open” and find the folder you saved the design part to.



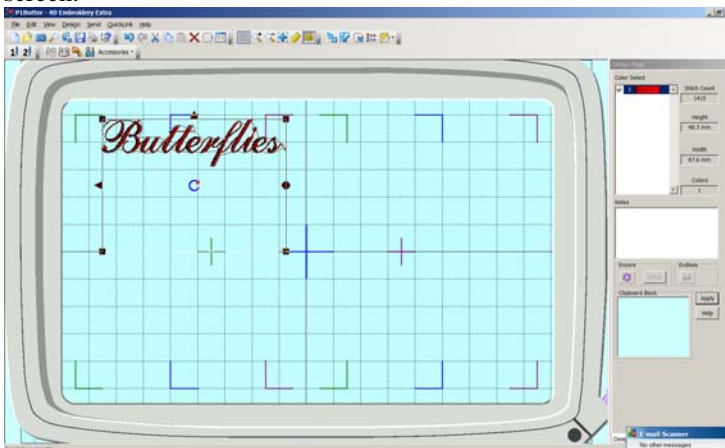
Notice the designs now are named P1 butter, P2 butter, P3 butter. Close that screen.

Let's bring them back onto the screen so we can make a printout. Click on "file, open plus/mega, p2".

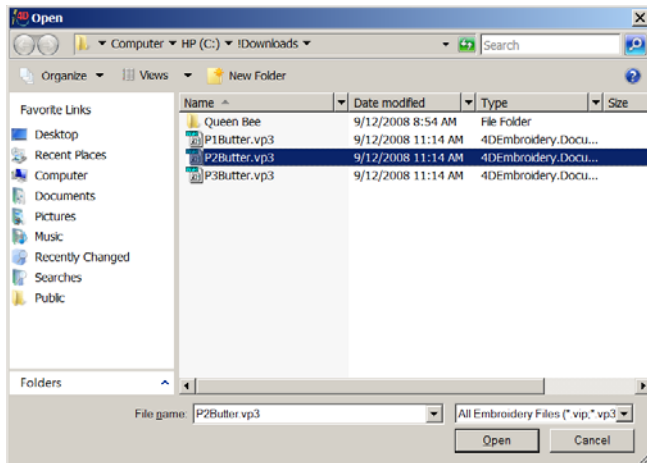
You will have to find that folder again.



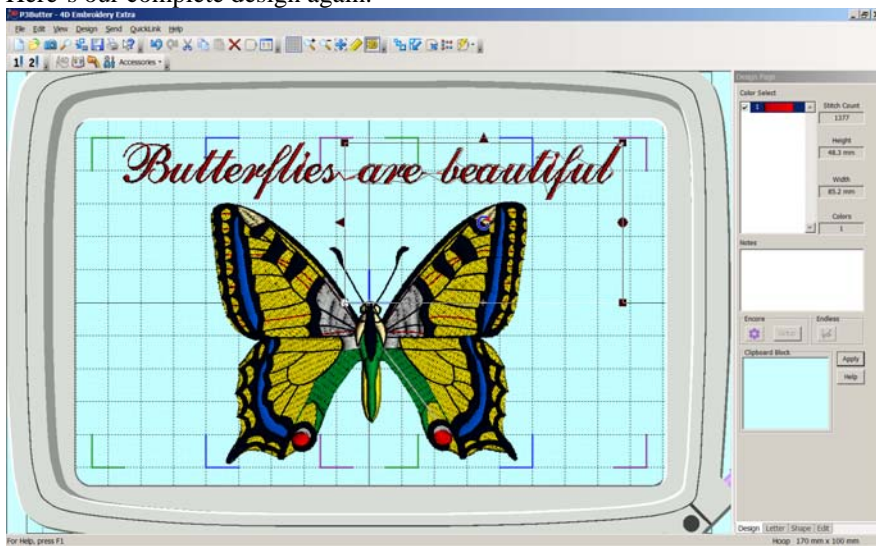
Click on the P1 butter and click on "open". The design will automatically fall into the correct place on the screen.



Click on "file, open plus mega" P2



Click on “open” and it will fall into the correct position too. Then do p3 the same way. Here’s our complete design again.



To print this out as one complete design, we need to click on “combine” again so it knows we want one complete print out. But the designs will still be in 3 parts.

When you put the designs on the card, you must put all 3 parts on the card.

Slide the hoop to position 1 and choose design part 1.

Then slide the hoop to P2 and choose design part 2 and then P3 and design part 3.