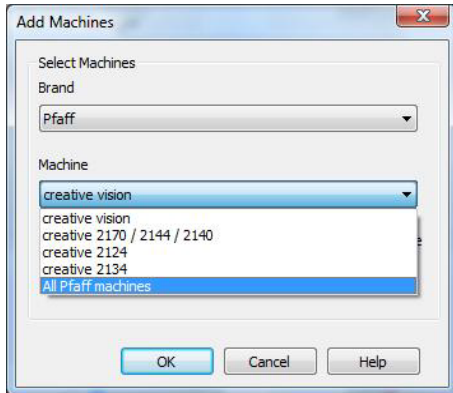


Pfaff machine stitches and Viking Machine stitches combined in 4D

In the “letter” tab, we have the choice of “machine stitches” and we can now combine the Pfaff and Viking machine stitches together to use in our embroidery.

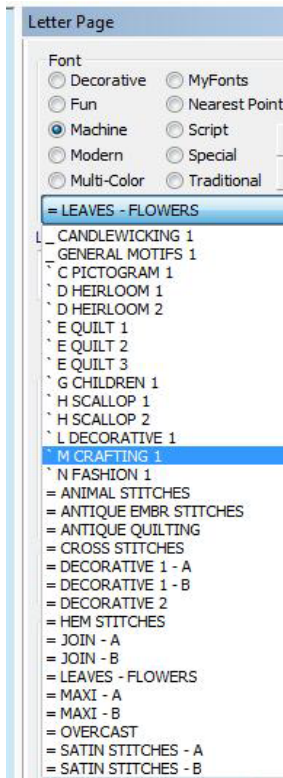
Open the “Configure” program and click on "machine manager". Touch the word " add".

Click the down arrow in the first box and select “Pfaff”.



Click on the arrow under “machine” and choose “all Pfaff machines”.

Open the 4D Embroidery or 4D Embroidery Extra program and click on the lettering screen and choose "machine fonts" and you will see the list is much longer.

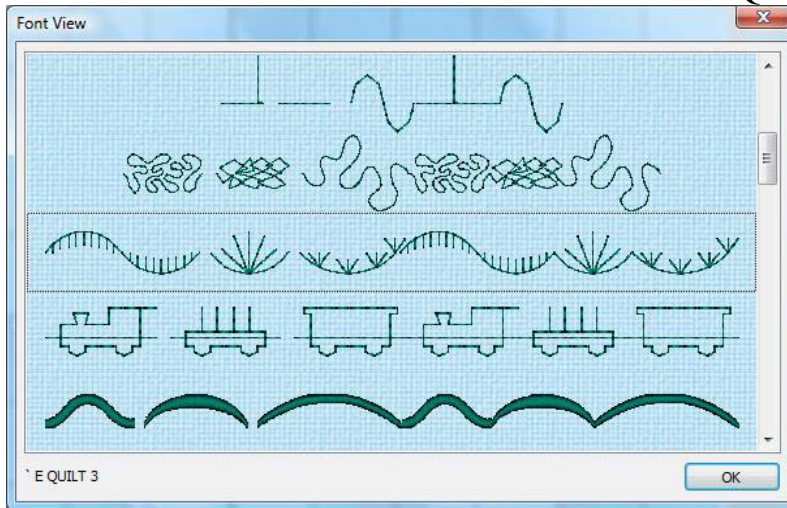


The first two categories with the - symbol were both Viking and Pfaff.

The next group with the “acute accent” symbol are Viking machine stitches.

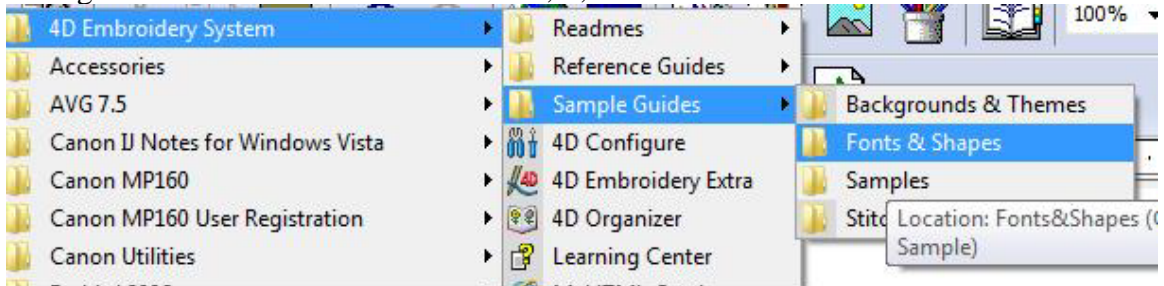
The last group with the = sign in front of them were Pfaff machine stitches.

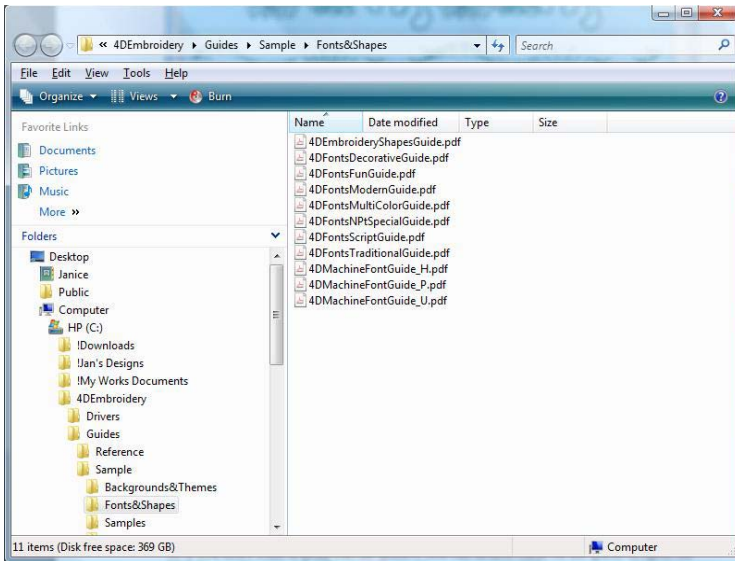
If you click on the camera, the stitches will show as pictures for you to view. I clicked on the one that has the outline around it and it shows it as E QUILT 3.



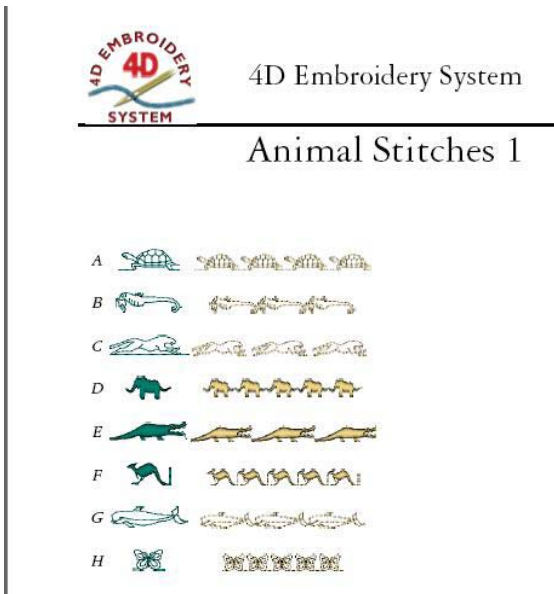
Now that you know what category it is, you need to look at the guide that you should print out for the machine stitches.

To find the guides, click on "start, programs, guides, fonts and shapes" and you will see the 3 guides on at the bottom of the list. H, P, U





It will tell you what letter you need to type to get that stitch. Note that on this page, if you type the letter A, you will get a turtle.



Or if you don't want to print out the guides, you can double click on the guide to open the PDF file and look at the guide that way.

You can minimize it to the taskbar when you are not using it and when you want to know what letter to type for the next one, then you just click on the tab on the taskbar and bring it up again to search for the next stitch or stitches. But you might need to have all 3 of the guides open depending on what stitches you need the code for.