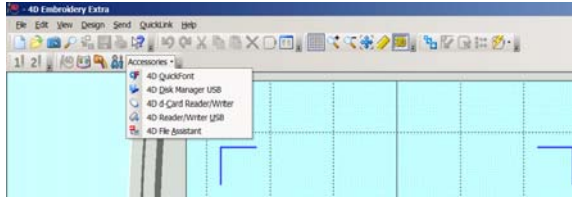
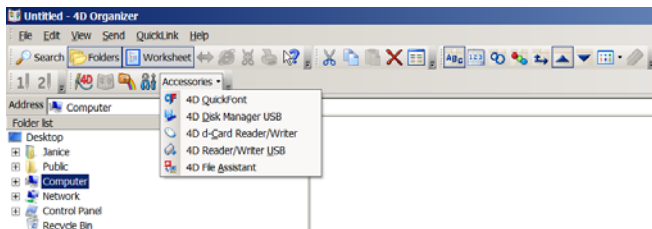


Using Configure and Machine Manager to add Pfaff stitches, Disk Manager, Reader/writers and File Assistant *By Janice Henning*

Let's look at the **Quick Link toolbar** first so you know where to look when you want to use these various modules in the software. This first picture is of the 4D Embroidery screen.



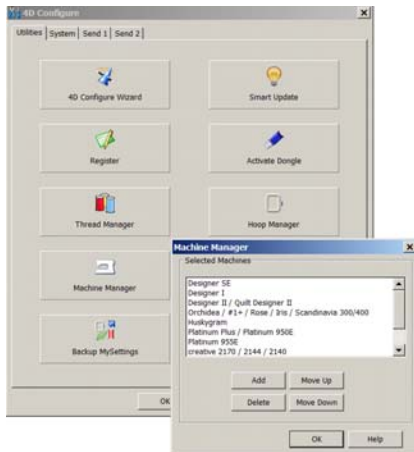
This picture is of the **4D Organizer** but 3D would look very much the same except for the “trim command” (scissors with +).



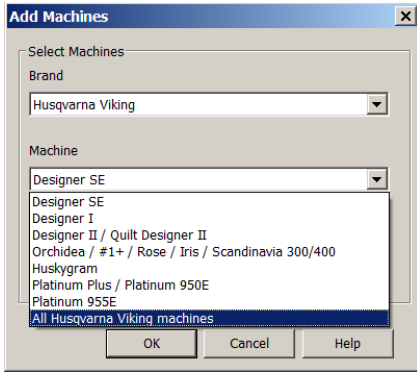
Notice the choices of **Quick Font**, **Disk Manager** (for people with the D1 or D1 USB), **D-card reader/writer** (for people with Designer II or Quilt Designer or Platinum), **Reader/writer USB** (for people with Viking 1 Plus, Rose, Iris, Scandinavia), **File Assistant** (for people with the Pfaff machine)

If we choose **all Viking Machines** and **all Pfaff machines** in **Machine Manager**, we will have all of these choices under Accessories. But the neat thing is that we will also have the **Pfaff machine stitches** to use in our lettering tab/machine stitches.

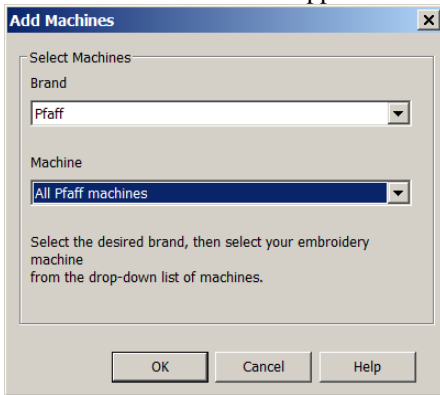
Open the Configure program and click on “**Machine Manager**”.



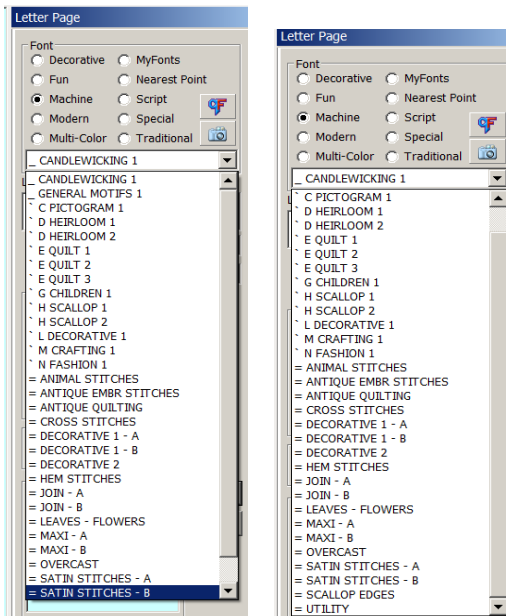
Click on **Add** and the top window will show “Husqvarna Viking“. Click on the arrow in the bottom window and choose **All Husqvarna Viking machines** and click OK.



Click on “add” again and this time **touch the arrow at the right of the top window and choose Pfaff** and **click on the arrow in the bottom window and choose “all Pfaff machines”** and click on **OK**. Now, all of those choices should appear under “accessories” just like my program shows them.

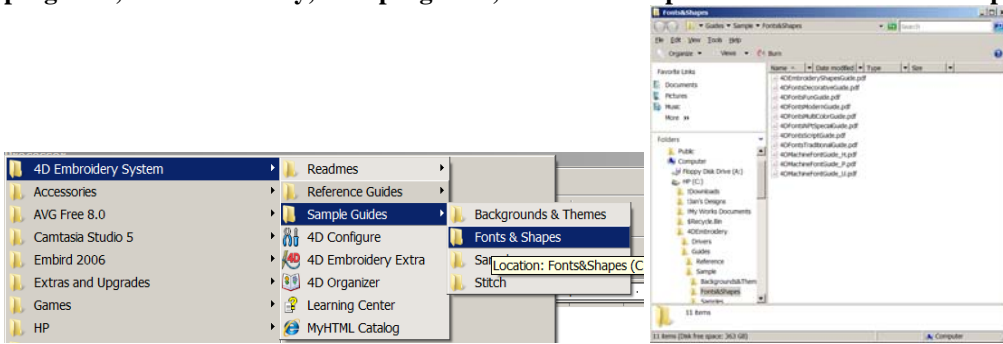


Let’s look at the “machine stitches” in the letter tab and you will see all of these.



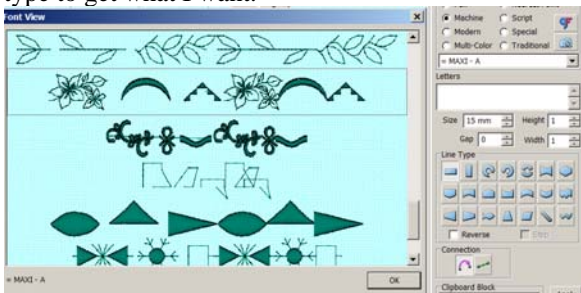
The first two with the dash in front of them are on both the Viking and Pfaff machines. **The next 12** have an accent mark in front of them and these are **Viking machine stitches**. The ones with **the =** are **Pfaff machine stitches**.

Print out the PDF guides that will tell you what letter to type to get the stitch you want. **Click on “start, programs, 4D Embroidery, Sample guides, Fonts and shapes. Click on “fonts and shapes”.**



The last 3 PDF files are the ones to print out for “machine stitches. Notice the H, P and U (represents the first 2 listed under machine stitches).

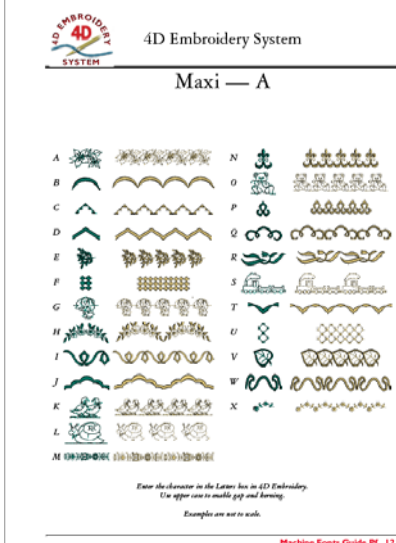
Let’s click on the **lettering tab** and choose “**machine stitches**” and touch the “camera” to view and notice that **I chose Maxi A** as noted on the bottom of that screen (the ones with the box around it) to see some of the stitches in that category. But, I don’t see all the stitches in that category and I don’t know what letter to type to get what I want.



The printout or PDF file shows **I must type the letter A or a if I want the flower.** If I type one A or a, I would get one single design.

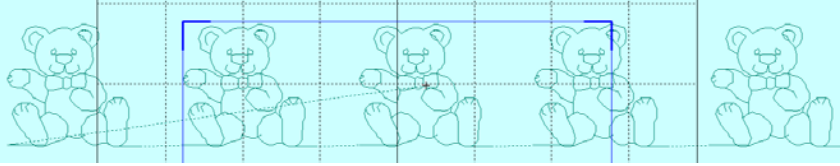
Typing the **letter B** would bring up a scallop and **K** would be the ducks and **O** would be the teddy bear.

Notice the message at the bottom of each page. That’s important.

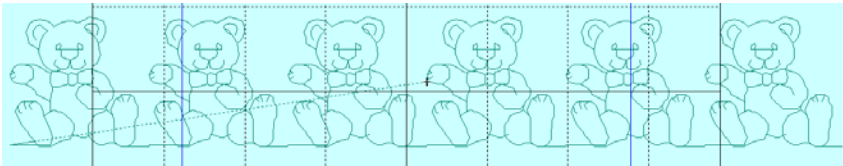


I must type the capital A if I want a gap between stitches if I decide to type AAAAAA or **type the lower case so each stitch will be attached to the previous one with no gap** such as aaaaaa.

First I typed 6 capital O's and the second line represents 6 lower case o's in size 25. In edit, you can see that the top teddies do not have the lower lines connected but the bottom ones do.



Notice the dashed line represents a jump stitch.



These stitches are terrific because you can size them any way you want. You can use different line types such as "circle clockwise". You could type one single "o" and click "apply" and click on the design screen and choose "encore" to get pretty much the same effect as using circle clockwise.

You can use "vertical line type" or use "encore" for a line or even around the hoop area.

