

Designer SE Embroidery Stick Info for Newbies *By Janice Henning*

This tutorial will explain several ways to put designs on the embroidery stick using the Windows Explorer, 3D or 4D Organizer and using the Send Command from either the Organizer or the Customizing screen.

Ways to open the “Windows explorer”

Hold down the Windows logo key on the bottom left side of your keyboard (sort of looks like a flag) and tap the E key. (*This is the shortcut for opening the explorer.*) OR, you can “right click” on “start” and click on “explore”.

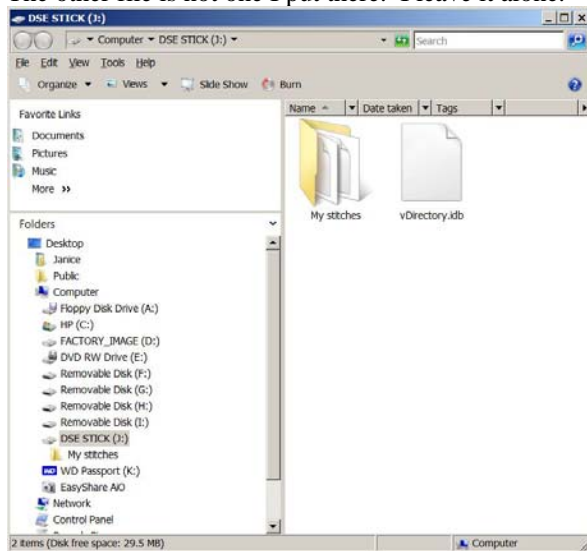
The explorer is sooooo important because it’s the filing system of the computer. When you click “open or view” in any of your software, **you are actually accessing the “explorer” to find your files.** When you install programs, you add more files. When you add designs or make new folders, you add more files.

Insert the stick into the drive. **I want you to understand how tell what port is holding the stick.**

Scroll down to see the drives. **My DSE stick is highlighted** and it shows it is the **J Drive**. Yours may be a different drive depending on which port you insert it into. Your stick might say DSE stick or Embroidery stick or San Disk or Kingston depending on what stick you are using.

You can even “right click” on that drive and rename the stick. I re-name each of my sticks so that when I insert it, I can tell which drive holds my stick just by looking at the name.

On the right side of the explorer screen, you will see what’s on that stick. Right now, the only thing on the stick is a folder that contains “my stitches” that I saved from the sewing machine. These are NOT designs. The other file is not one I put there. I leave it alone.



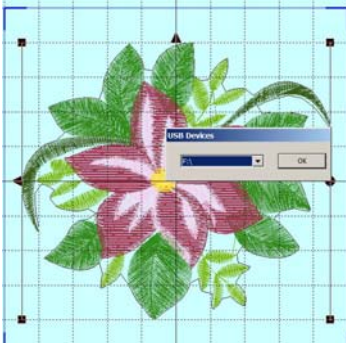
Touch the “minimize” button (looks like a dash) on the top right side of the screen to reduce the “explorer” to a tab on the taskbar. It will still be open so you can bring it later by just clicking on it.

Explaining the Send 1 or Send 2 command:

You can only send **one** design to the stick with the “send1 or send 2” icon on the toolbar. When it appears on the stick, it will be called something like “#send.vip”. Each time you send a design using that command, it will replace the former design because it appears with the same name.

1. Sending a design from the 3D or 4D Customizing screen:

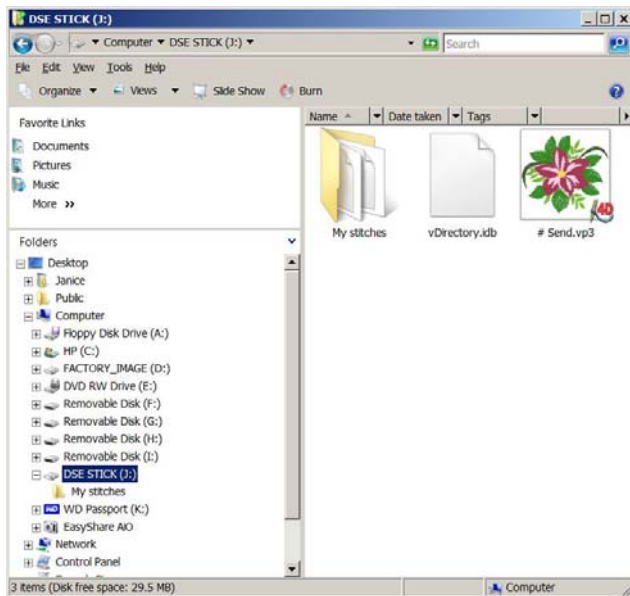
Open “3D or 4D Software” and bring a design up on the screen and touch the send icon. My “send 2” is set up to send to the stick. When I clicked on send 2, this pop up appeared but it showed the wrong drive. I know my stick showed in the explorer as drive J. So, I click on the down arrow and choose drive J and
 Clicked on OK.



Touch the Explorer tab on the taskbar to bring it up again. I click on the J drive to see what is showing on the stick now. I have Embird’s Iconizer and it let’s a picture appear instead of just the name of the design. I love this feature because it makes it so much easier to see what is actually in my files.

If you don’t have Embird, you can purchase a program from www.sandscomputing.com called Sew Iconz that is only \$20.00 and it will create those pictures too. I wouldn’t do without it. I can click on “view” and select “list, or small, medium or large or thumbnail” to size the pictures the way I want. This is “medium”.

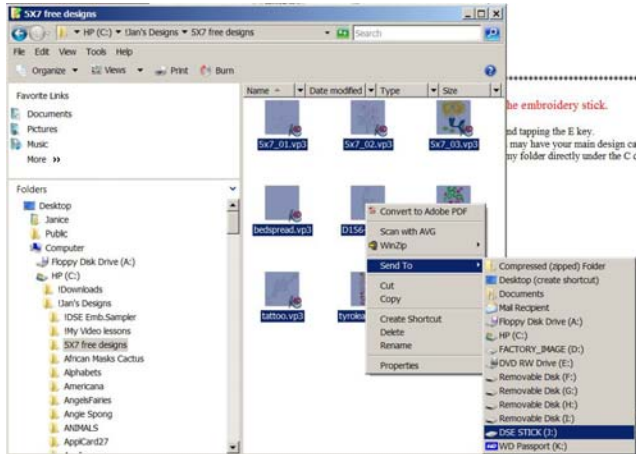
Now, you can see that the design I sent to the stick now appears and notice the name of the design.



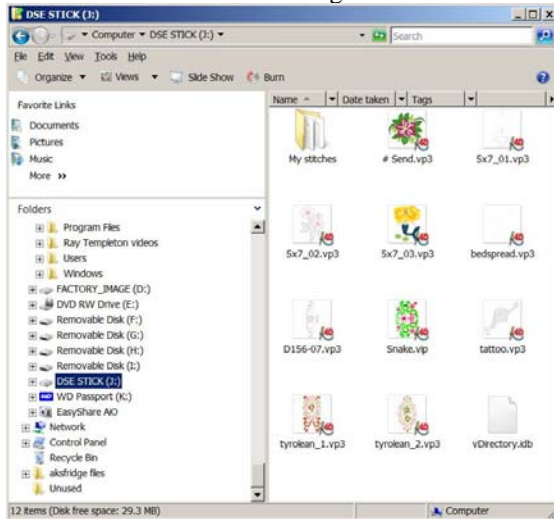
2. Using the Explorer to send more than one design to the embroidery stick.

Open the “explorer”. Click on the Plus sign in front of the C drive to open it up. You may have your main design category under the 4D program/My designs. I do not have mine there. I have my folder directly under the C drive where I find it easier to access.

I've chosen this highlighted folder and I'm going to hold down my "control and A key" at the same time to select all of the designs. Then I "right click" on one of the highlighted designs and choose "send to, DSE stick". All of those designs will appear on the stick. *You could also highlight the designs and drag them across the dividing line to the drive holding the stick. You could also highlight them and then click "edit, copy and then click on the drive holding the stick and click on "edit, paste".*



Let's look at that same drive again to read the stick now.



We have the original folder with "my machine stitches" and the designs we sent with the "send command" and now we have the designs sent directly from the "explorer".

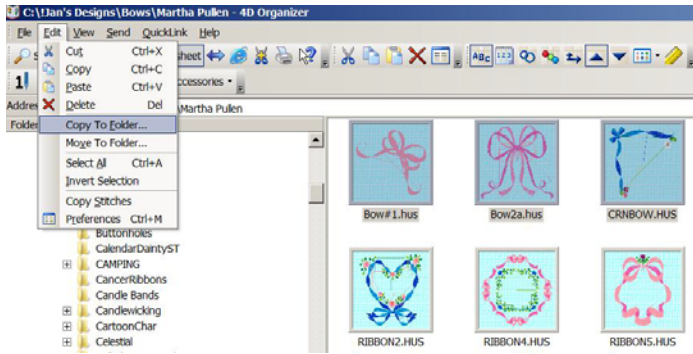
Note: the organizer does not see that folder of "my stitches" because they are not designs. They are "stitches" that only the Designer SE can see.

3. Using the Organizer to send designs to the stick.

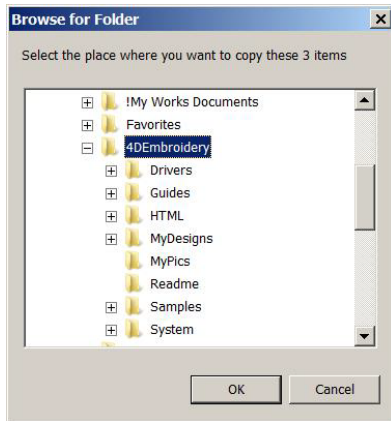
Open the Organizer and choose a folder of designs. If you click on **one** of the designs and click on the "send" command on the toolbar, it will be sent to the stick the same way as you did from the Embroidery screen.

If you want more than one, then select the ones you want by holding down the control key and click on

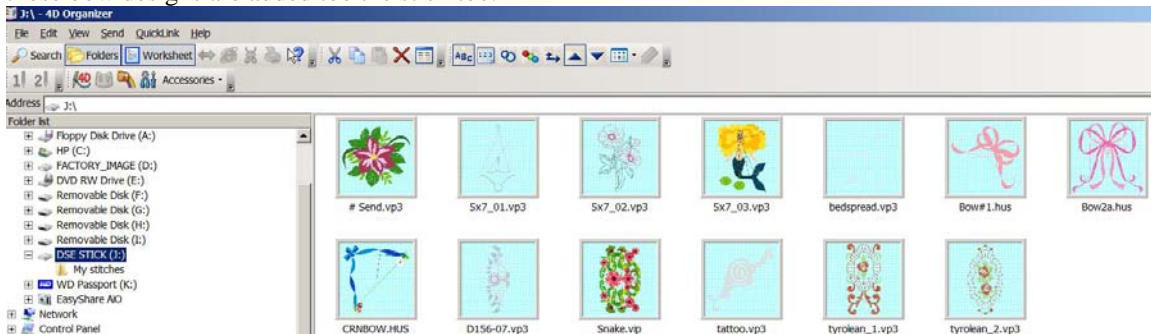
each one to highlight them. If you want all of them, then hold down the “control and A key” to highlight all of them. I am only go to select 3 of them in this exercise.



Click on “edit, copy to folder” and a pop up will appear. Scroll down to find the drive holding the stick and click on it and click OK.



The Organizer is still open, so click on that drive on the left side of the Organizer screen so we can see that those bow designs are added too the stick too.



If you wish to delete any of them, just select the ones you don’t want and touch the X on the toolbar.

Then click on “view, refresh” and the new view will reflect what is left on the stick.

Using the embroidery stick on the machine.

Insert the embroidery stick in the machine (the machine can be on when you do this) . Click on the “white

folder” at the top called “file manager” and this screen will appear and the highlighted folder will be called “My files”.



If I click on the “devices” icon under the flower icon, any devices such as the computer and all of it’s drives and the embroidery stick or even an external floppy drive that is attached will appear on the screen. Whatever you choose will now be highlighted in the blue area with the round ball at the end.



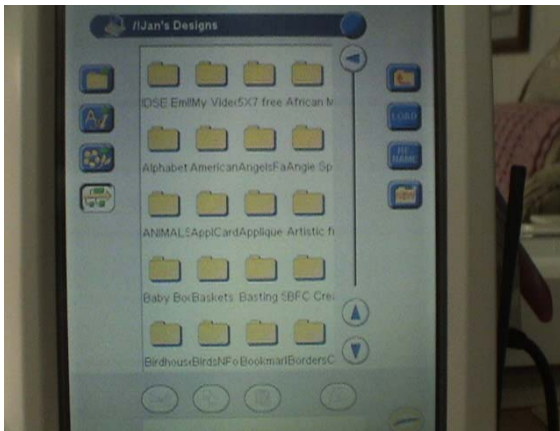
If I click on the icon that looks like the embroidery stick and click on “load”, I can see all of those designs I put on the stick. I select one or more and click on “load” and they appear on the screen.



I can click on the C Drive to view the files on my computer. Notice the PC C: is now highlighted to show you are seeing the C drive from the computer.



I can click on the folder called “!Jan’s Designs” and see all of my categories of designs that are on my computer. Note that the “!Jan’s Designs” folder is now highlighted and if I click on one of those folders, it will open and I can select any designs I want.



If I had an external floppy drive attached to the machine, I could click on that too to read any disk inserted in that drive.

Organizer can be used to send **one** design to the machine using the “send command”. It must be in the embroidery mode.

Organizer can be used to send as many as 100 designs to the machine and they will be added to the “**my files**” folder under **File Manager**. *I don’t like to do this because I don’t think it’s wise to overload the machine with designs that stay on it. But, you could also delete them very easily.*

Highlight the designs and click on “**file, send multiple**”. Then open the “**file manager**” and “**my files**” will appear and those designs will be showing.