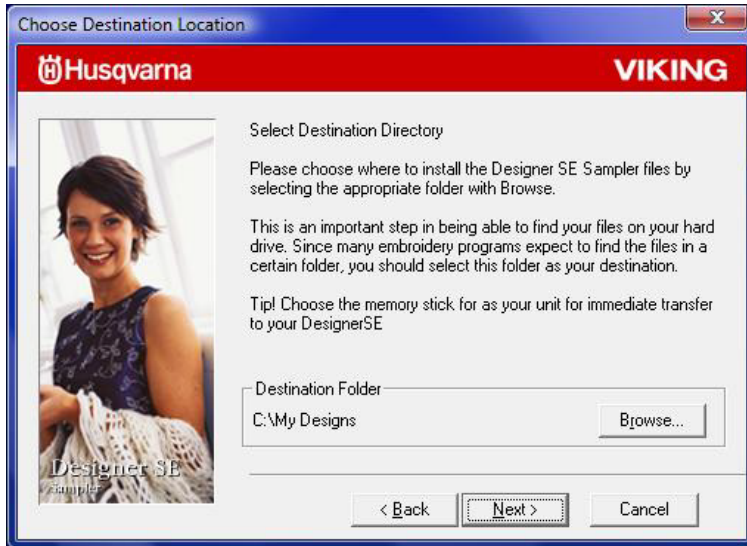


Designer SE Sampler Disk

The disk that came with the SE is just a backup for the designs and fonts that are already on your sewing machine and on your stick **BUT** it also includes extra designs that are called Classic Collection. The **“Classic Collection”** are designs that came on other Viking machines through the years.

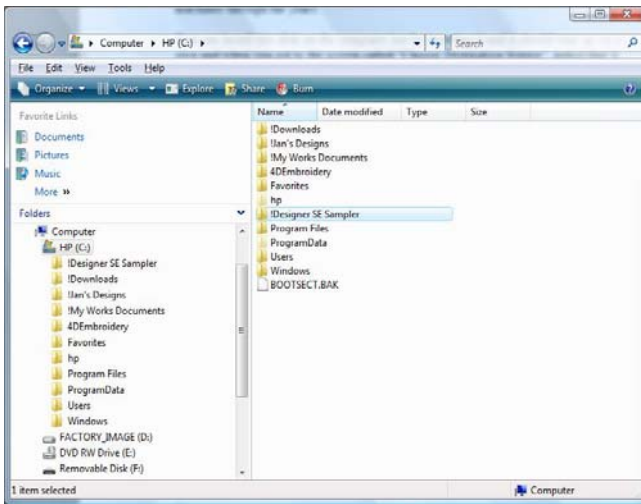
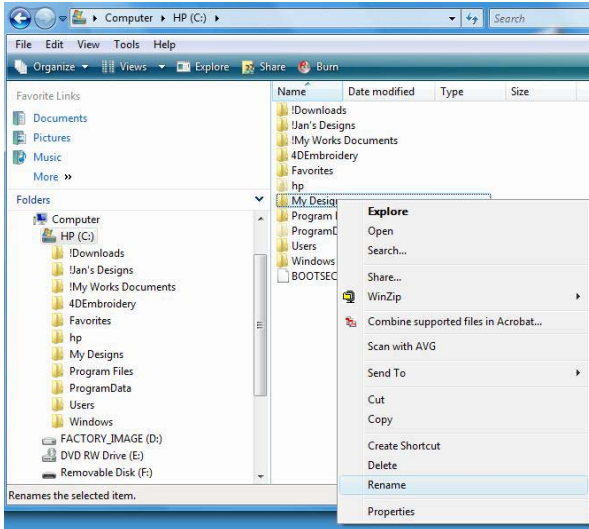
You can install this disk on the computer just by inserting it and it should start up on its own and when you get to the screen called "Choose Destination Screen", notice that it shows **it will install under the C drive and the folder will be called "My Designs"**.



This is NOT the "my designs" folder that is under the 3D/4D Embroidery program.

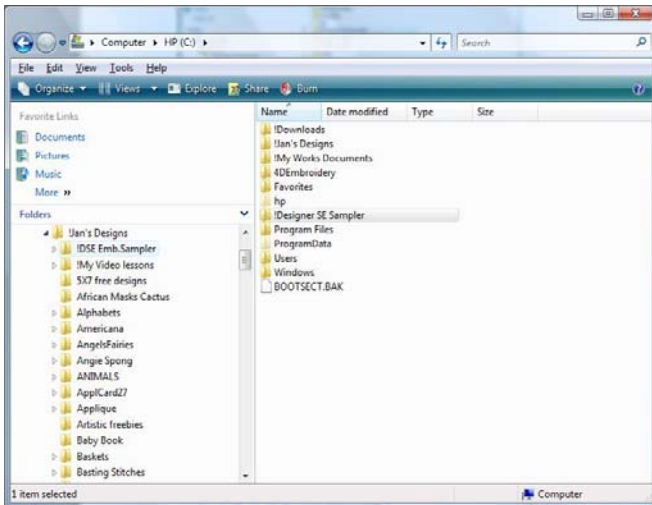
After installing this disk, **I renamed that folder "!"Designer SE Sampler"**. The exclamation mark will make it land right under the C drive so you can find it easier. Notice, the C drive shows the “my designs” folder on the left side and the right side.

I **“right click”** on the folder on the right side and click on **“rename”** and type the new name right over the highlighted folder **“!"Designer SE Sampler”**.



I never keep any of my designs under my program files. I prefer to have them under the C Drive. So, my main folder of designs with all the sub folders of categories of designs under it has been renamed "**!Jan's Designs**".

Then I transferred the "**!Designer SE Sampler**" folder to the "**!Jan's Designs**" folder and that made that folder the first one under my special folder and all the rest of the categories are listed next such as animals, butterflies, flowers, etc.



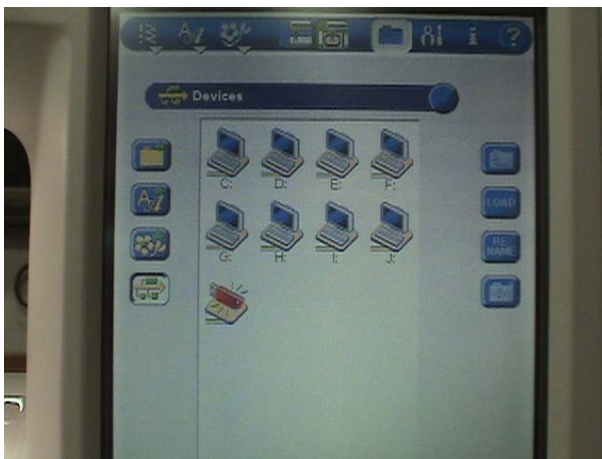
All of the designs in the "sampler" folder can be seen with your 3D or 4D Embroidery Studio or 3D/4/D Organizer.

The fonts can only be seen on the sewing machine. So, the fonts folder is really just a back-up of the embroidery fonts already on your machine.

Viewing designs and fonts on the sewing machine.

When you attach the embroidery unit and then turn the machine on, a pop up will appear and you must touch it so the arm of the unit calibrates to the center position and it is automatically in the "customizing mode".

Touch the folder to the left of the "tools icon" and this is "my files". You will see an icon for fonts, a flower icon representing the built in designs and the devices such as the drives on the computer and any device plugged into the computer or the machine like the embroidery stick or maybe an external floppy drive.



If you touch the flower icon on the left side, you will view the built in designs that are the same as the designs on the CD you installed in the folder called Designer SE designs.



If you click on the A/a, you will view the built in fonts for the sewing mode and the embroidery type of fonts that are built into the machine. These embroidery fonts are the ones that were on the CD that you installed on the computer.

If you click on the “embroidery stick” icon as in the picture above, and then click on “open”, you can view the designs or folders on the stick and click on “open” to open a folder or click on a design and “load” to have that design appear on the screen.

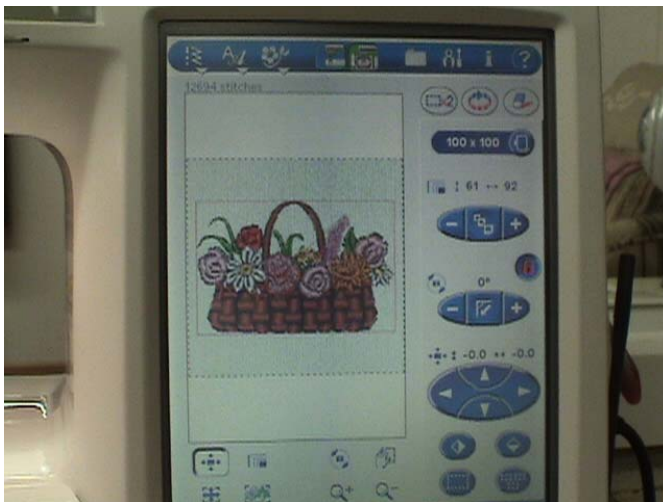
You can click on the C drive and actually see the folders on your computer that is under the C drive.



You can select your “Designs folder” (mine is “!Jan’s designs”) and select a folder of designs and click on “open” to view the designs from the computer on your sewing machine screen.



Select a design and click on “load” and that design will appear on the screen.

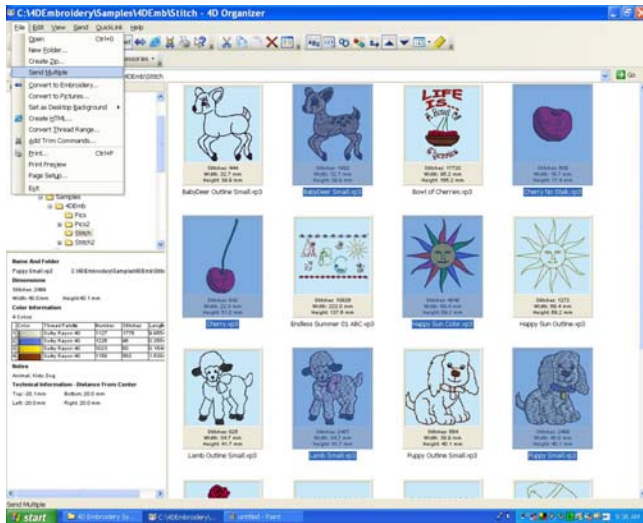


If you decide you don't want that design, make sure the select box is around the design (touch the design to select it) and then touch the eraser at the top right to delete it.

You can open your program on the computer and bring a design up on the screen and touch the "send 1 or send 2" (whichever you checked for the direct connection) and that design on the screen should show up on the sewing machine screen.

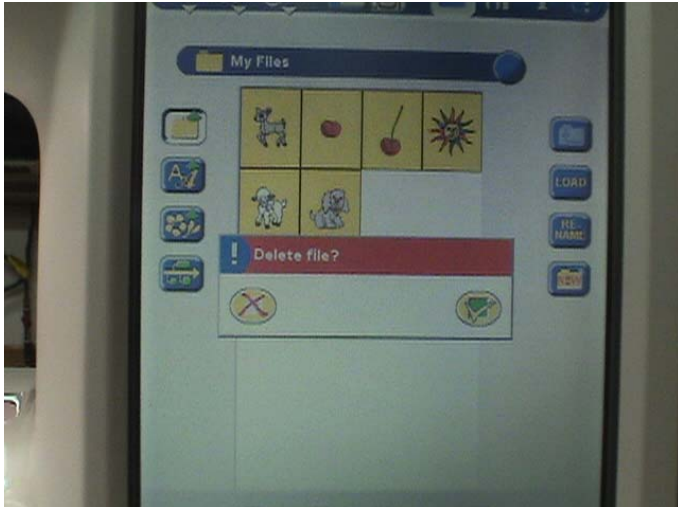
You can also **open the Organizer** and select a design and use the “send” to send a design to the sewing machine screen.

You can send as many as 100 designs at a time to the machine **by opening the “organizer”** and clicking on a folder of designs and highlight the ones you want and then **click on “file, send multiple”**. They will go to your machine in the “My Files” folder as seen in the pictures below.



I really don't like to do that because I have the designs on my computer and I don't see the point of overwhelming the memory in the sewing machine. I generally send the one I want to stitch out at the time.

If I want to delete those designs, I touch one or as many as I want and you can see they are highlighted meaning they are selected and then **I can touch the "delete icon" at the bottom right side and delete all of them at once** by touching the checkmark to confirm my choice to delete.

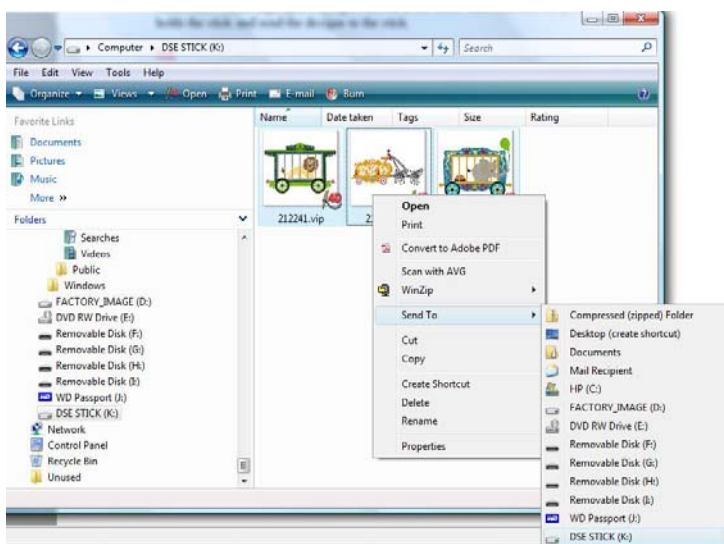


Using the embroidery stick

You can open the "explorer" on the computer, insert the stick in a USB port, find the folder of designs you want to choose from. Highlight one or hold down the control key on the keyboard and select as many as you want. Once they are highlighted, right click somewhere on the highlighted designs and click on "send" and then find the port that holds the stick and send the designs to the stick.

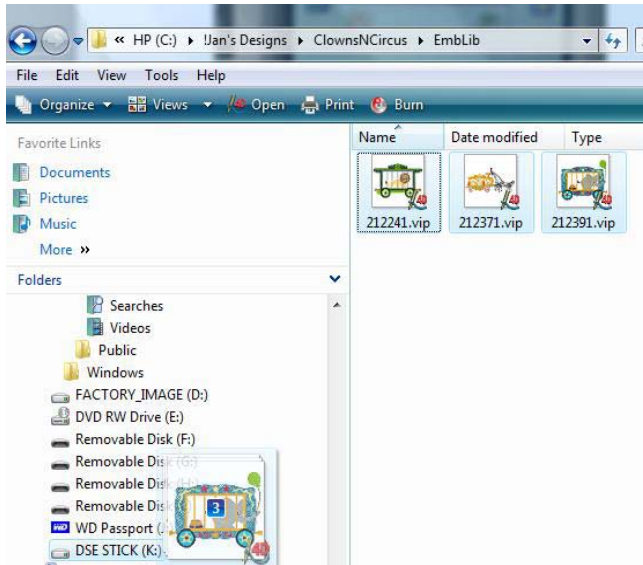
You can select a different folder and choose more designs and once they are selected, right click and click "send" and again find the port holding the stick and click on it.

I have Embird's Iconizer so that's the reason my explorer shows pictures of the designs. Sew What from www.sandscomputing sells a program called SewIconz for \$20.00 that does the same thing.



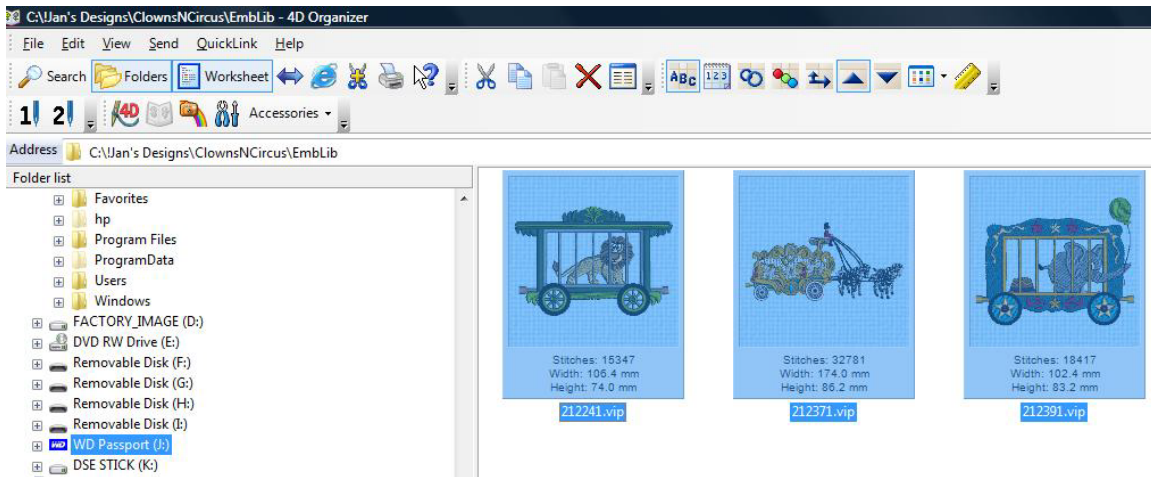
OR

Highlight them and left click and hold the mouse button somewhere in the highlighted designs and drag them to the port holding the stick.



OR

Open the Organizer, open the folder that holds the designs and select them to highlight them left click and hold somewhere in the highlighted designs and drag them to the port holding the stick as explained above.



These are just some ways to send designs to the stick.