

Fonts from D 1 USB stick saved to computer.

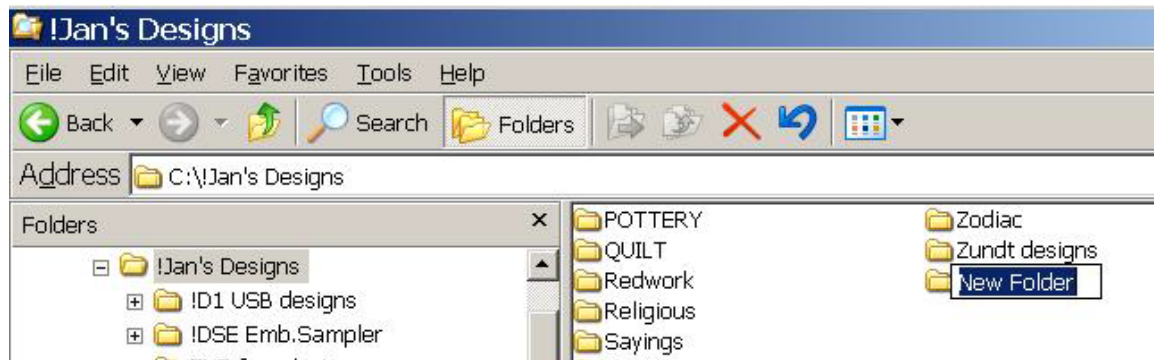
First, let's make some folders to hold those fonts using the "explorer" which will make it less complicated.

Hold down the Windows logo button on the lower left side of your keyboard and touch the E on the keyboard and the "explorer" will open.

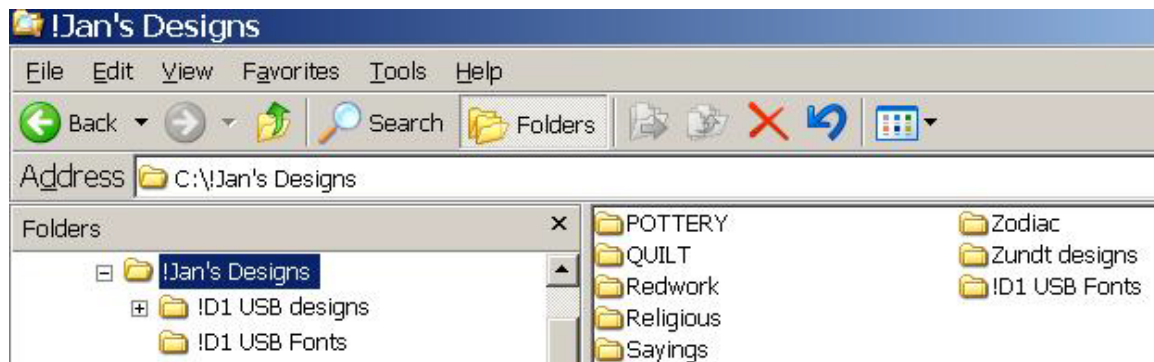
Click on the "C" drive and locate your main folder of Designs. Mine is called "Jan's Designs".

Click on that folder and then click on "file" and scoot over to "new" and scoot to "folder" and click.

The words "new folder" will appear on the right side and will be highlighted in blue.



Type "**!D1 USB Fonts**" right over those highlighted words. Notice I typed an exclamation mark first so it would appear near the top. Touch the enter key or click in an open space to set the name. The new folder name will now appear on the left side and the right side.

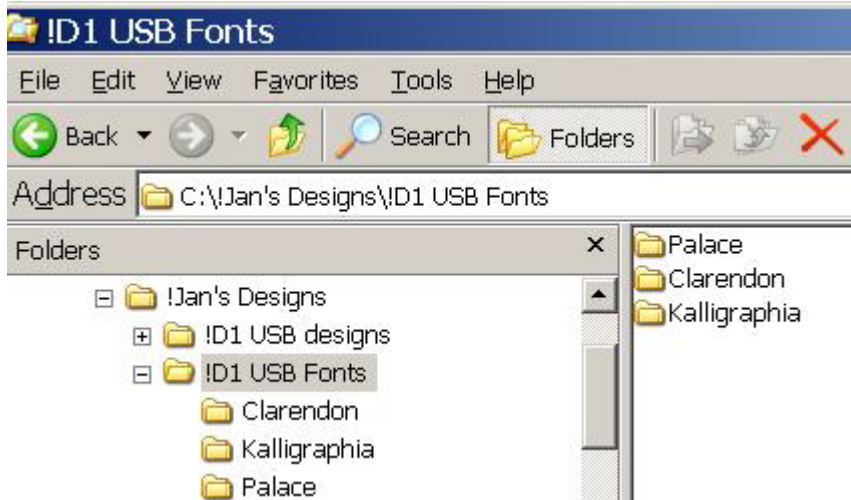


Let's create the 3 fonts folders as sub folders under the !D1 USB Fonts folder.

Click on the **!D1 USB Fonts** folder and click on "file, new and folder" and type "Palace" and touch the enter key to set it as a folder.

Click on the **!D1 USB fonts** folder again and click on "file, new and folder" and type "Clarendon" and touch the enter key to set the name.

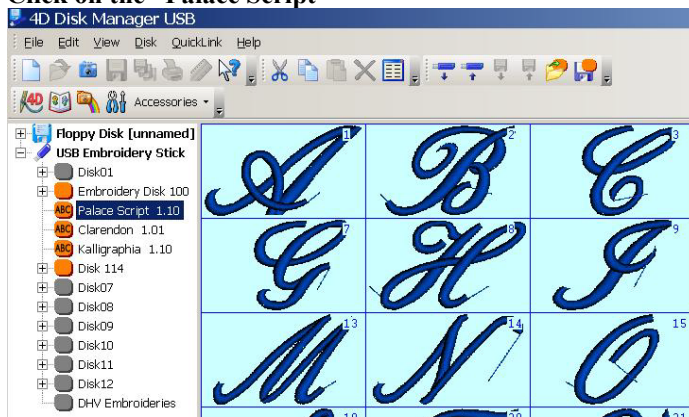
Click on the **!D1 USB fonts** folder again and click on "file, new and folder" and type "Kalligraphia" and touch the enter key to set it. Then close the "explorer" screen.



Now, we have all the folders set up so it will be easy to save the fonts to them.

Open the Disk Manager and insert the stick in the computer and read the stick and you will see that all of the orange menus have something in them.

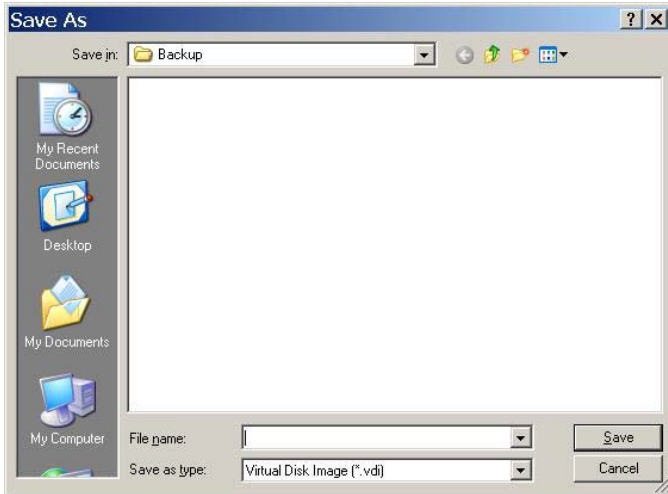
Click on the “Palace Script”



In the upper right corner, you will see an icon with a floppy disk with an orange circle. That’s called “save disk”.

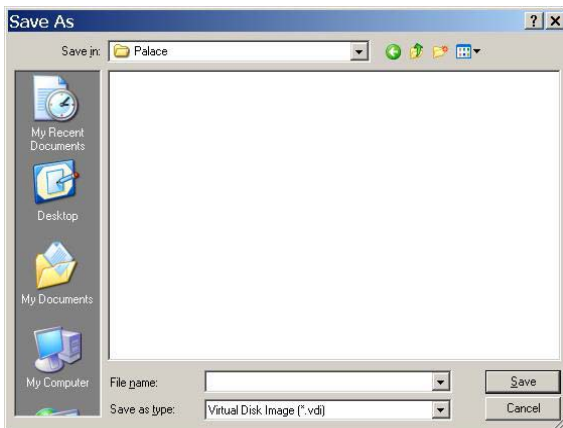
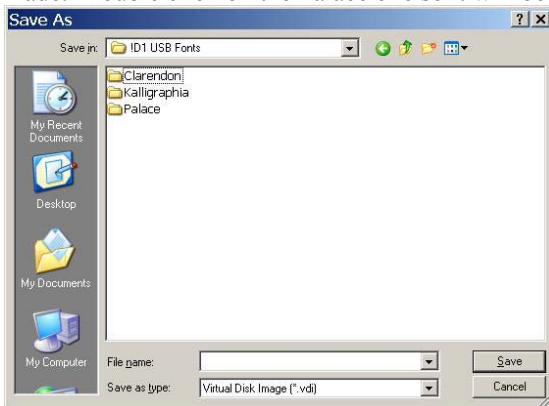


Click on that icon and this screen will appear.



Notice the save in window says Backup. I don't want mine in that file, so I click on the down arrow at the right end of that window and click on the C drive and then find my main folder of designs and double click on that .

Then I double click on that "fonts" folder so it will appear in the window and reveal those sub folders we made. Double click on the Palace one so it will be in the window.



Type "Palace " in the "file name box and click on "save" at the bottom right.

Below you will see what will show in the "explorer" when I click on each of those fonts files. **The format is vdi (virtual disk image)** so it cannot be read by the program. Only the machine can read them.

