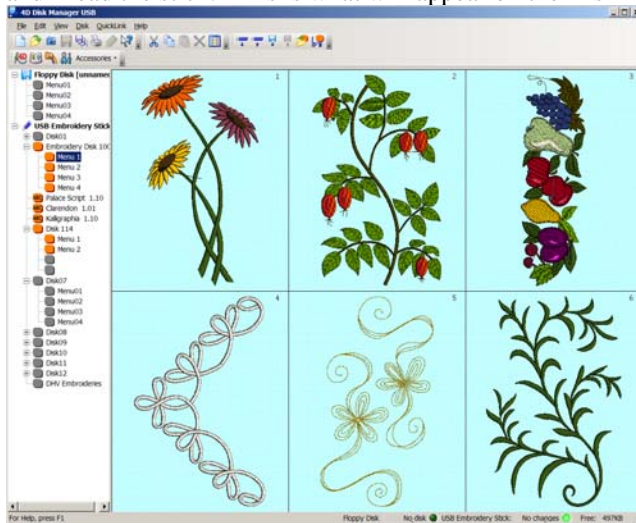


D1 USB stick used to save and write new designs

I have designs on the stick and I want to keep them there, so I open the Disk Manager and I insert the stick and I read the stick. This is what will appear on the Disk Manager screen.



If I click on any of the orange menus, it will show what is in those menus. The grey ones are empty. It shows that Disk 1 is empty because that is for sending directly to the stick from the program.

Disk 2 is the Sampler 100 designs in 4 menus.

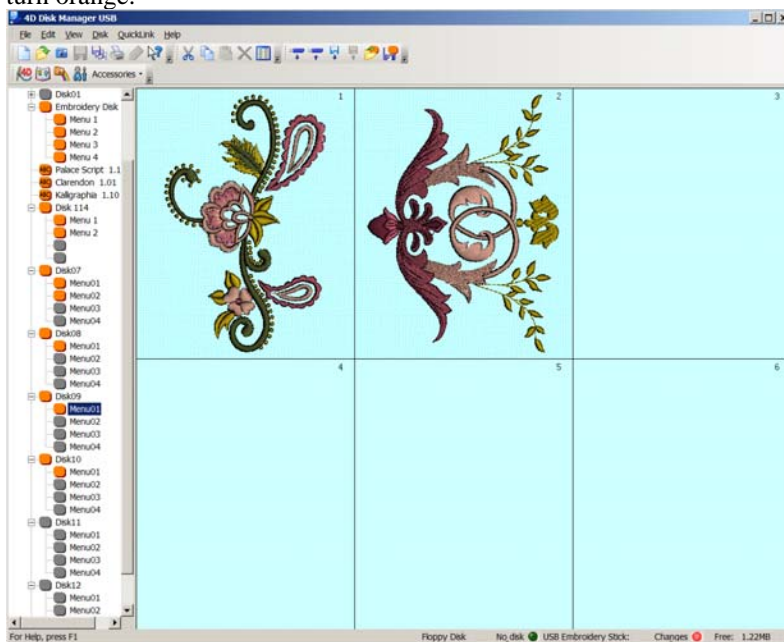
Disk 3 is the Palace script font.

Disk 4 is the Clarendon font.

Disk 5 is the Kalligraphia font.

Disk 6 is the Fashion Disk 114 designs in 2 menus

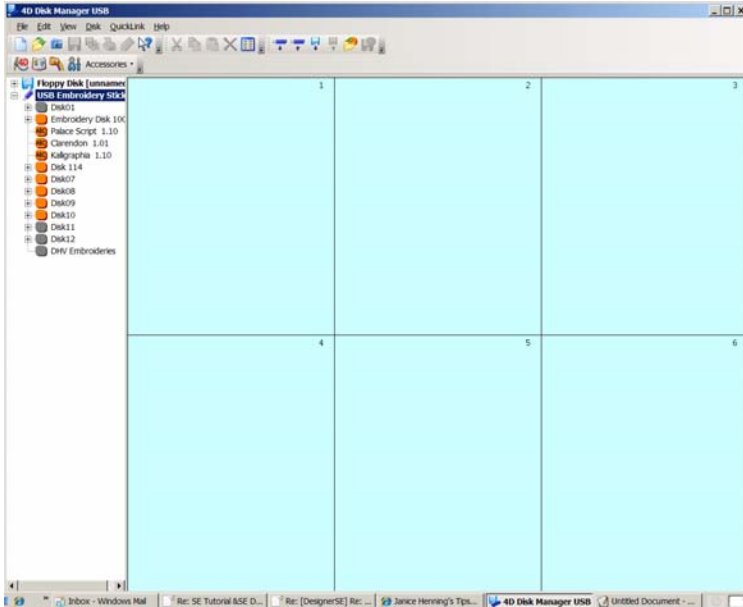
I added a few designs to Disk 7, 8, 9 and 10. Click on the “+” in front of each Disk # to open it and see the menus. You can put designs on whatever disk and in whatever menu you want. Click on “view or open” and find a folder and choose some designs. I chose several disks and put designs in some menus and they turn orange.



When you are finished putting designs on the stick, then click on “write to stick” on the toolbar (send stick

icon) and a warning will appear and you say it's okay. It's just going to clear the stick of whatever is on the stick. But, we read what was on the stick first, so we won't lose anything we still wanted so reads what is on the screen now and writes all of what is on that screen to the disk in those menus.

Now, let's clear the screen by clicking on the "new folder" (white folder) at far left side . Then we will read this stick again and see what it looks like. A warning will appear and click Yes or Ok.



I clicked on "read the stick" and you can see that those Disks from 1 to 10 are lit up in orange and if we opened each disk up, each menu will show what is on them.

Now, let's look at the stick through the explorer so you can see how those files look on that stick. My stick is in the J drive and you see it is highlighted and on the right side you see the filing system of the stick.

