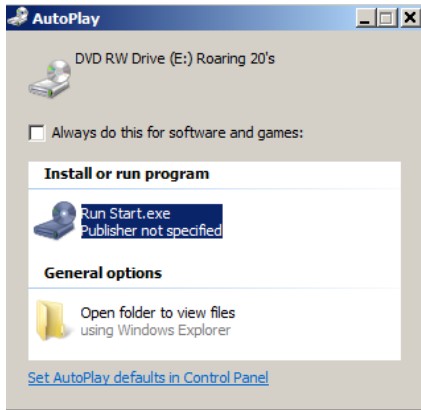
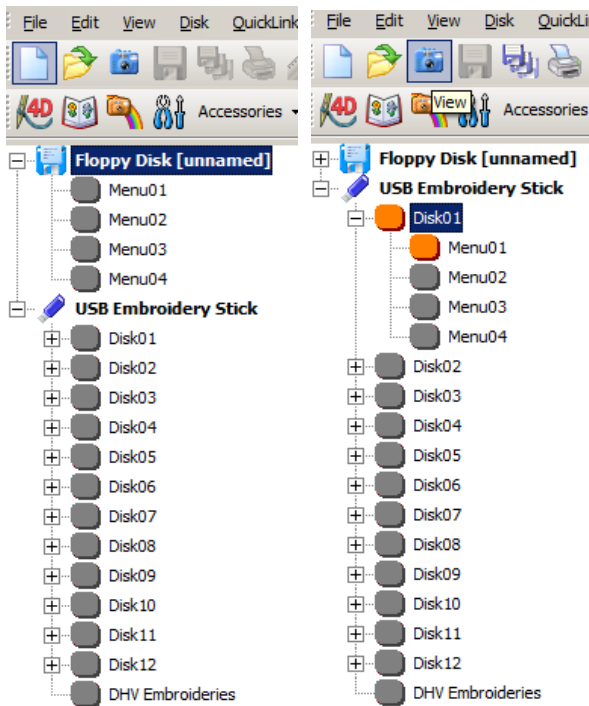


CD of designs written to Disk Manager or to a USB stick *By Janice Henning*

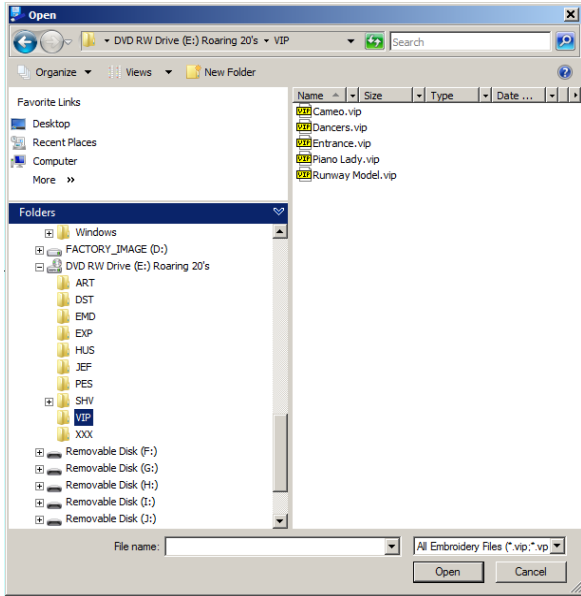
Insert the CD in the drive and hold the “**shift key**” down until the drive stops flashing. A screen like this will appear and just X out of it.



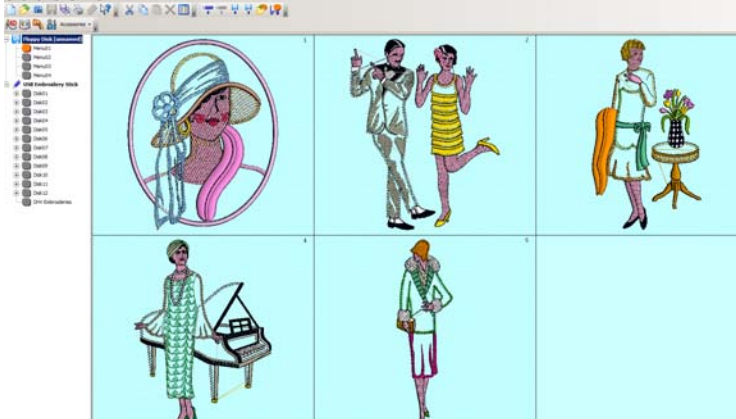
Open the Disk Manager and click on the “+” in front of the floppy drive if you have the D1 with a floppy. *If you have a D1 with the USB port, then click on the “+” in front of that to reveal the menus.*



Click on “open” (yellow folder on left side) and locate the DVD/CD drive and click the “+” in front of the DVD RW drive to reveal the folders of format. Some Cds may only have the format you ordered, some have many formats. Click on the folder of formats you prefer and the designs will appear on the right side of the screen.



If you want all of the designs on the floppy or stick, then hold down the “control key and touch the A key”. on the keyboard and then click on “open” at the bottom of the screen.



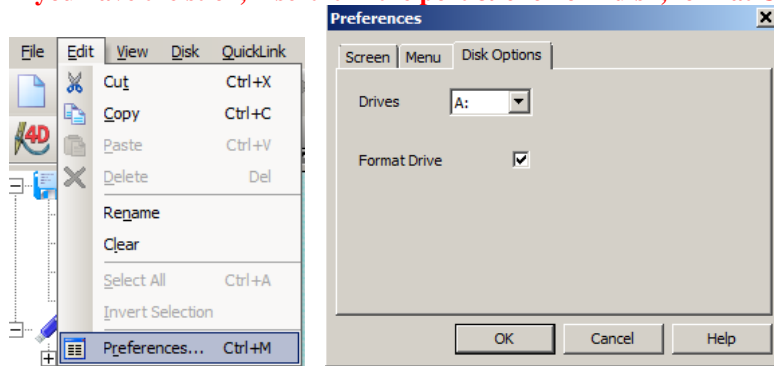
Notice that the first menu is now orange. If you had chosen the USB stick, then the first menu under that would be orange. (Unless you read the stick first to keep the designs that were on it) This means that is the only menu that has designs in it.

If you had a CD with a lot of designs, you might want to click on Menu 1 and then only choose 6 to 9 designs for that menu. Then click on “menu 2” and choose 6 to 9 for that menu and then 3 or 4. If you have the stick, then you have lots of disk/menus to choose.

Just remember that the more designs you put on the menu, the tinier the picture will appear on your Designer 1 screen. So, if you put 36 designs in a menu, you will have a difficult time seeing them on your machine.

Insert a clean floppy in the A drive. **Click on “edit, preferences”**. Click on **“disk options”** and **check the “format drive”** and make sure the A drive is in the little window. Click OK.

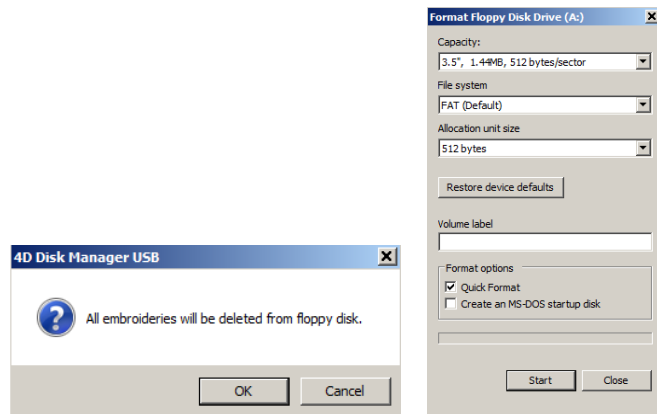
If you have the stick, insert it in the port & click on “disk, format USB stick”.



Once you have all the designs you want in each menu, **touch the “write to disk” icon** shown at the far right in the picture below. *If you have the stick, click on “write to stick” icon.*



This screen will appear and click ok and then the next screen is the format screen. Click on Quick Format.



You will get some screens about designs being erased and formatting so click on OK and then the blue bar will go across the bottom of the screen showing it is writing to the floppy disk.

Let’s check the disk. Touch the first folder at the top left side (NEW) to clear the screen.

Then click on “read the disk” icon to see what has written to the disk.



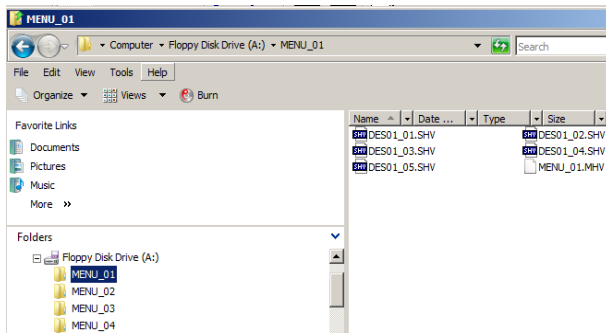
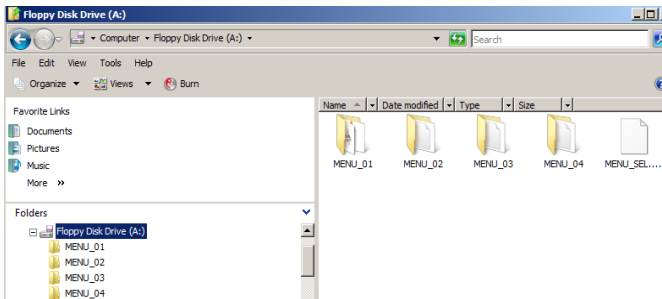
Or touch the “read the stick” icon.



The designs in the first menu will appear and if you put some in Menus 2, 3 and 4, those will show as orange now and if you click on each menu, you will see the designs in those menus.

Click on “new” to clear the screen and then close Disk Manager.

Let’s open the “explorer” and click on the “A drive” to see how it wrote the disk. See the menus on the right? Let’s click on menu 1 to see how it looks.



This is how the stick looks when we write the designs to it.

