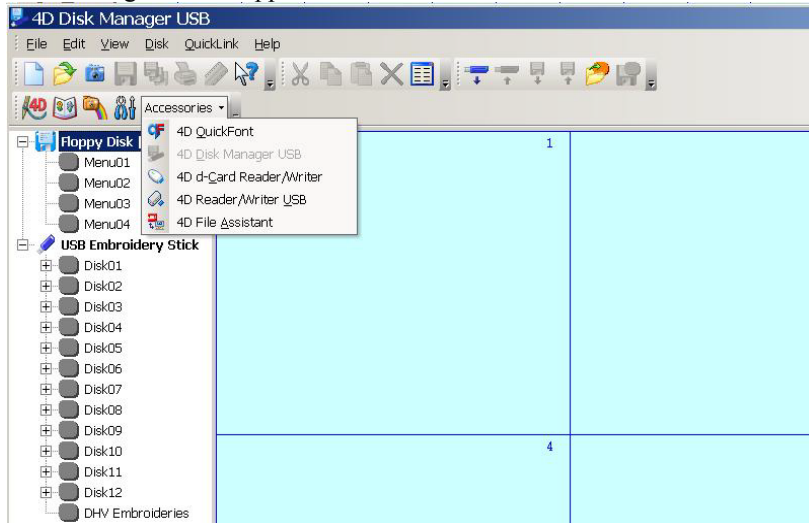


## Disk Manager missing in 4D

Disk Manager should appear under “accessories” on the toolbar.



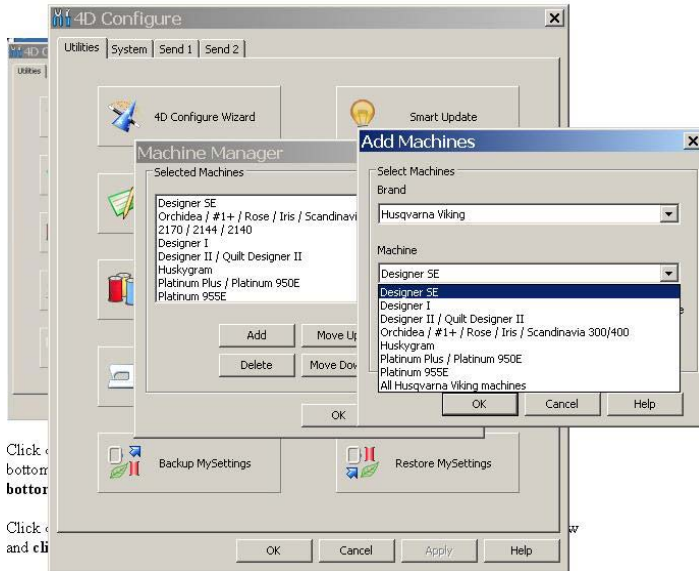
As you can see, accessories includes Quick Fonts, Disk Manager, D Card reader/writer, reader/writer USB and “file assistant”. If you have the Pro, you will have more choices.

If Disk Manager or File Assistant aren't there, then you haven't chosen **"all Viking machines" and the Pfaff machines**.

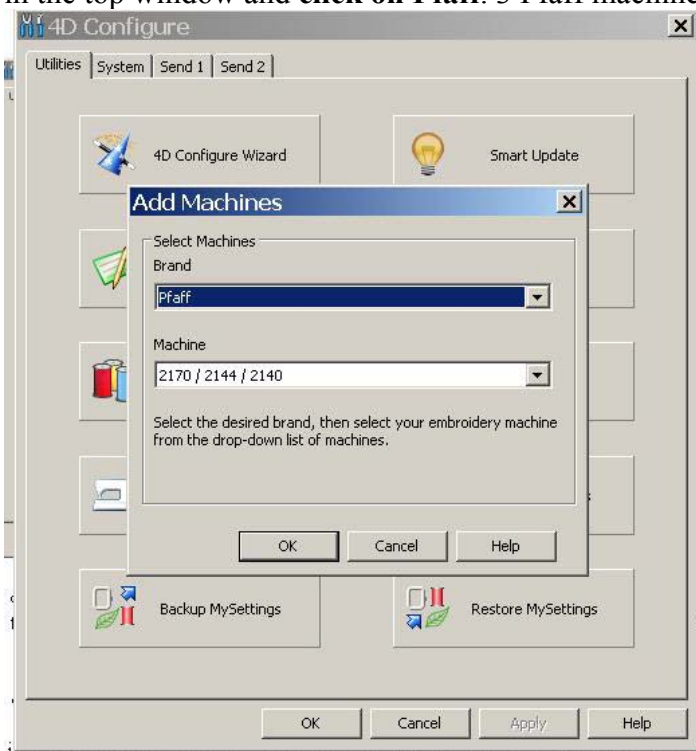
Let's fix it so you have everything you should have including the Pfaff machine and the Pfaff stitches that will be included in the **"machine stitches"** in the **letter/machine stitches category**.

Open the **Configure** program and click on **"machine manager"**.

Click on **"add"** and in the top window **Viking Husqvarna** will be showing. In the bottom window, **click on the down arrow** and choose **"all Viking machines" at the bottom of the list**.



Click on **"machine manager"** again and click on "add" and this time click on the arrow in the top window and **click on Pfaff**. 3 Pfaff machines will be selected and click on Ok.



Now, open your program and see what is listed under **"accessories"**.

Then if you click on the "letter tab" and "machine stitches", you will see all of Viking and all of Pfaff machines stitches.