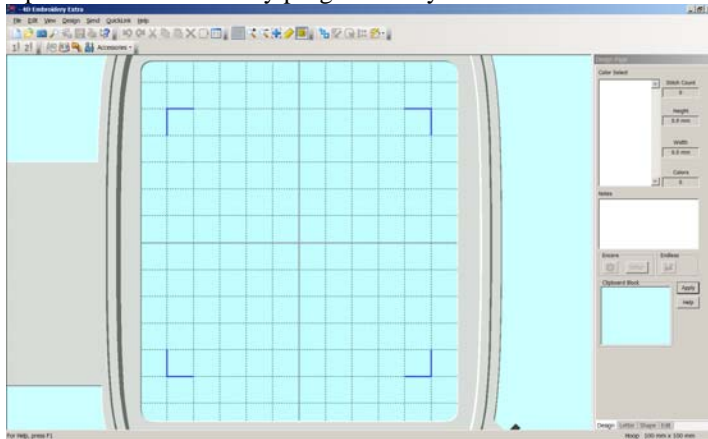
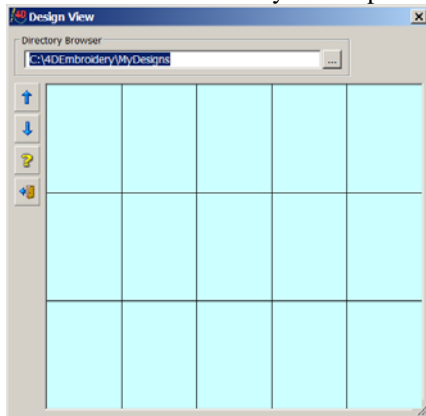


4D Sample designs viewed with the camera icon By Janice Henning

Open the 4D Embroidery program and you will see this screen.

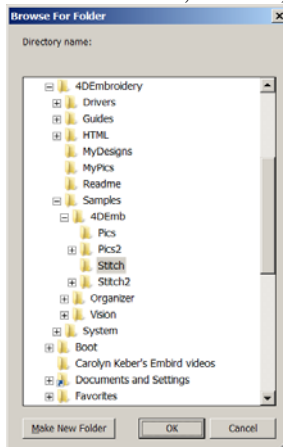


Click on the camera and you will probably see this screen that brings up “my designs”.

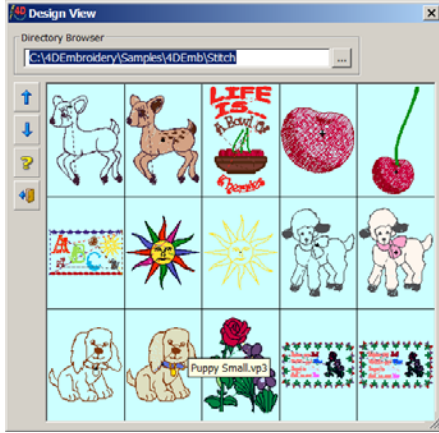


Click on the “browse buttons” (dots) to locate the 4D Embroidery folder and click on the “+” in front of it.

It will reveal other folders. Click on the “+” in front the “sample” folder to open it and click on the “+” in front of 4D Emb, Stitch 2, Organizer and Vision to reveal sub folders with designs in them.

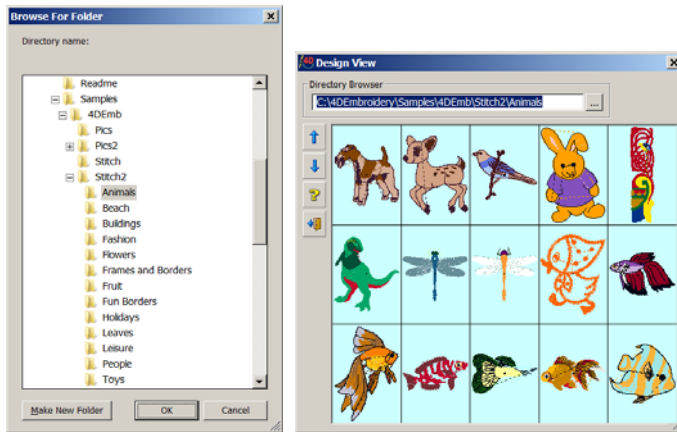


If you click on “stitch” under the 4D EMB folder, it will show what’s in that folder.

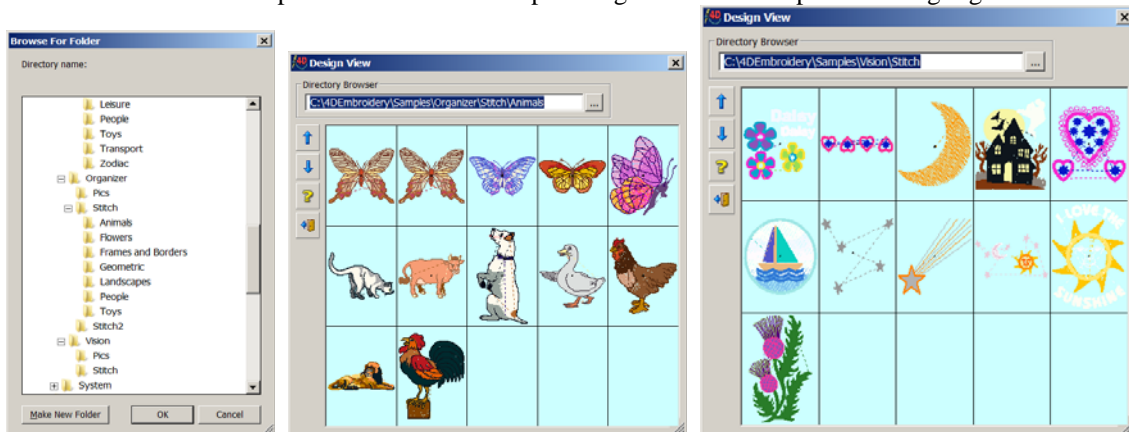


Click on the down arrow to view the next page.

If you click on the “+” next to “Stitch 2”, it will reveal lots of categories of designs and if I click on the animal folder, you see the designs in that folder.



Scroll down to Organizer and Vision and click on the “+” in front of those to reveal more “stitch” folders to open and view more sample designs. Note files opened are highlighted.



Vision just has one “stitch” folder, whereas the Organizer’s Stitch folder contains folders of categories.