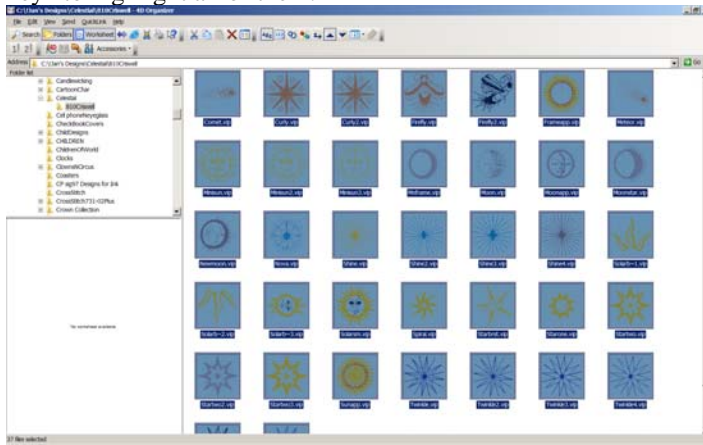
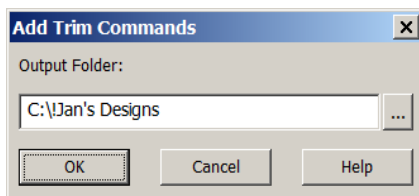


4D Organizer used to add trim commands *by Jan Henning*

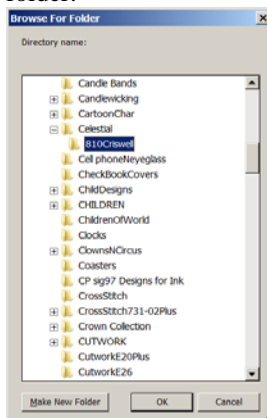
Open 4D Organizer and locate a folder of designs that you wish to add the trim commands to. Left click on one design OR hold down the control key and select more than one OR hold down the “control and A key” to highlight all of them.



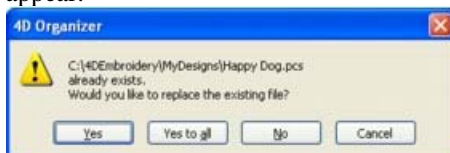
Once they are highlighted (selected), the “add trim command” icon is now active. It is the scissors on the left side of the toolbar with a “+” in the middle of it. Click on that icon. This pop up will appear:



My original folder was a sub folder under “Celestial”. I can click on the “browse buttons” (dots) to locate that same folder and I could put the designs in there. OR I could make a sub folder under that folder.

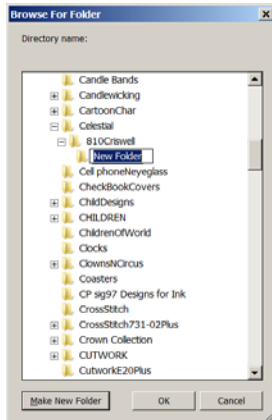


If I click on Ok, they will overwrite the original designs because the format and name are still the same. Select the desired Output Folder and click OK. The selected embroideries will have trims added and will be saved in the selected folder. If an embroidery file already exists with the same name, a message will appear.

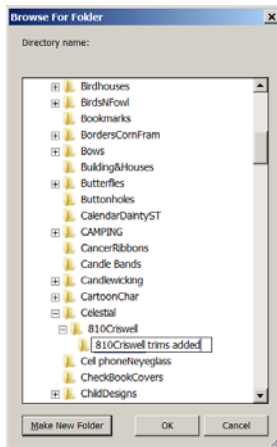


Choose Yes to overwrite only the named file. Choose Yes to All to overwrite that file and all subsequent duplicated file names.

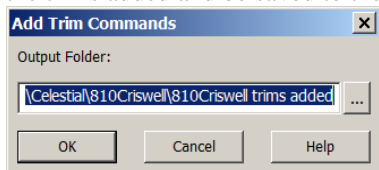
You might want to keep the originals and click on **“make new folder”** and call it **“810 Criswell trims added”**.



Type the new name over the highlighted words.



Click on OK and now it shows the new folder you created. Click on OK and all of those designs will have the trims added and be saved to the folder you chose.



Let's check that file to be sure. **Click on “view/ refresh”**. The new folder shows up as a sub folder under my 810 Criswell folder. Click on that new folder with the trims added and the designs will appear.

