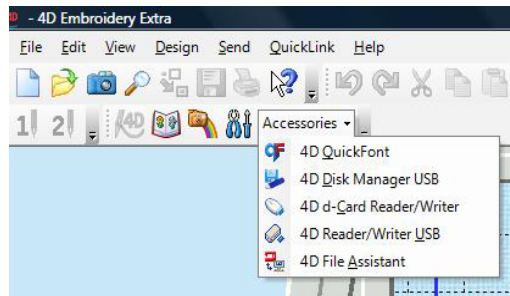


4D Disk Manager USB *By Janice Henning*

www.sewmuch4retirement.com

****If you have an external floppy drive, attach it **before** you open the Disk Manager program.**

When you use 4D Embroidery, On the Quick Link toolbar, click on “accessories” to find the Disk Manager USB. This is for the D1 with floppies and the D1 USB that uses the embroidery stick.



Click on 4D Disk Manager USB to open that module.

This is the disk Manager toolbar. Look on the right side of the screen to see that the “**Read stick**” (icon of stick with arrow pointing down) and “**Read Disk**” icons (floppy disk with arrow pointing down) are lit up.



If you click on the Plus to the left of the words, “**floppy disk**”, it will open up and show you 4 menus. This is the part you will use if you have the Designer 1 with floppies.

You can put designs in all 4 menus if you want to. I prefer to use menu 1 and I don't put more than 9 designs on it. When you put too many in a menu and then open that menu on the Designer 1, the pictures will be too small to make out.

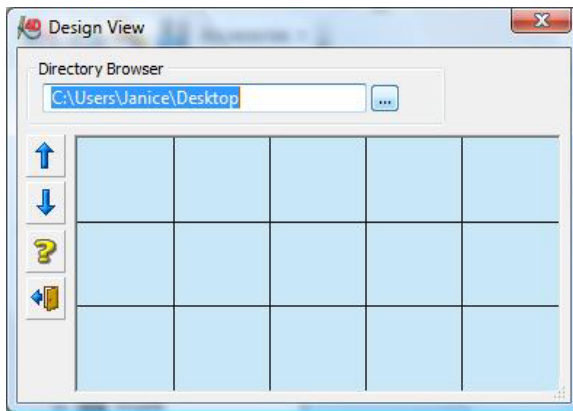
Designer 1 with Floppy disk drive

So, let's start with people who have the Designer 1 and find some folders of designs and put them on the screen.

If you have designs on the disk that you still want to keep there, **click on “read disk” icon first**. All of the designs will show up on the screen.

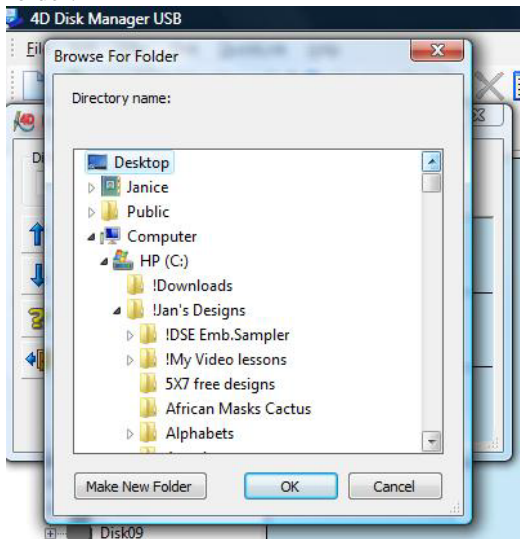
If you don't care to still have them on the disk because they are on the computer and you want to replace those designs on the stick, then don't bother to “read disk”.

Click on “view” which is the icon that looks like a camera (not the “view” on the menu bar). It might come up with this folder showing.



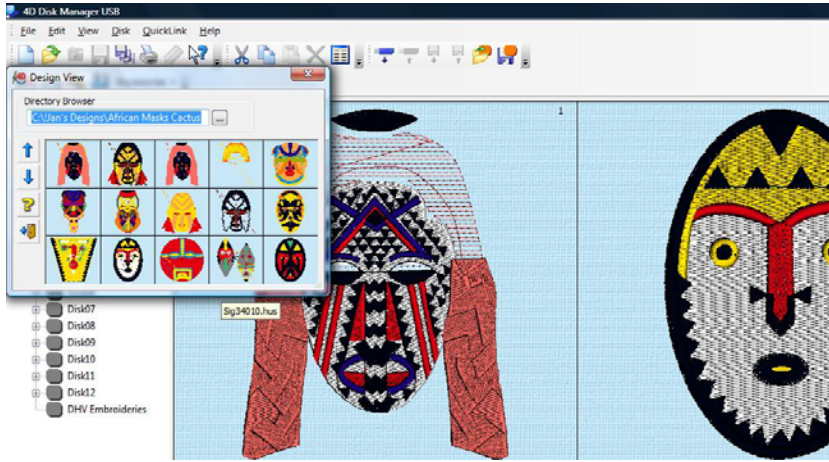
I want to find a different folder than the desktop, so click on the dots (called browse buttons) and you will access the “explorer” that is the filing system of your computer.

Click on the symbol in front of “my computer” and then the symbol one in front of the “C drive” and you will see my folders of designs, called “Jan's Designs” and I click on the symbol in front to open that folder.



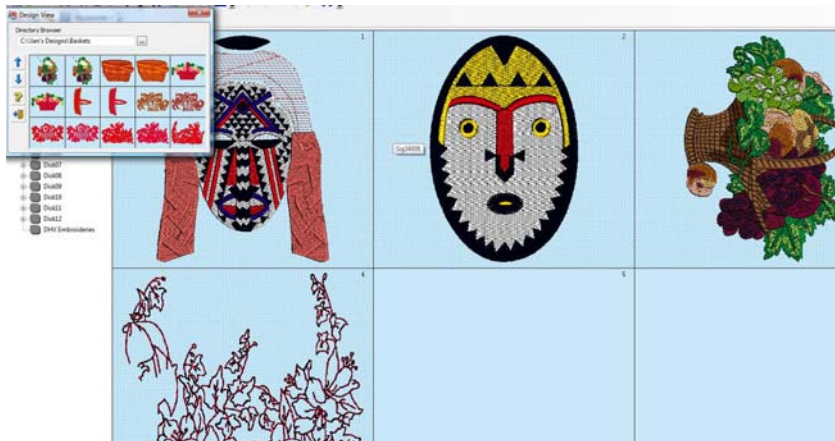
Then I can choose a folder that contains some designs I want to stitch out. Only you know what your main folder of designs is called and where it is located.

I'm clicked on "African Masks". and clicked on Ok and the designs in that folder will showed up. I will click on two of them and they will appear on the screen.

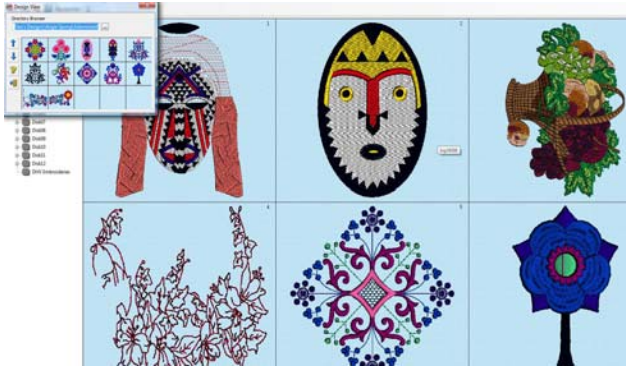


I want some designs from another folder, so I'm going to click on those browse buttons again. Click on the symbol in front of Jan's Designs folder again to open it up again and I will scroll down or click on the down arrow to find another folder of designs.

I chose "baskets" and clicked OK and now the contents of that folder appear and I chose two of those designs and they appear on the screen too. Click on the down arrow on that "design view" screen to see the next page and the next.



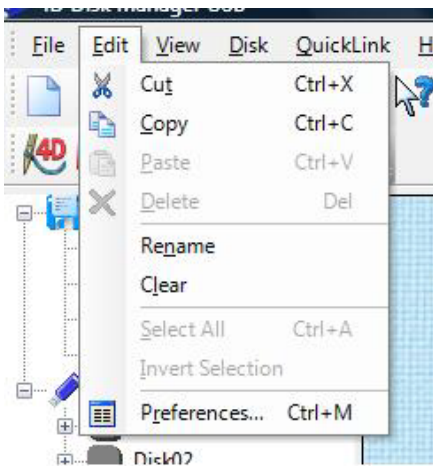
Let's find another folder. Click on the browse and the symbol in front of "my designs" folder to see all the categories again.



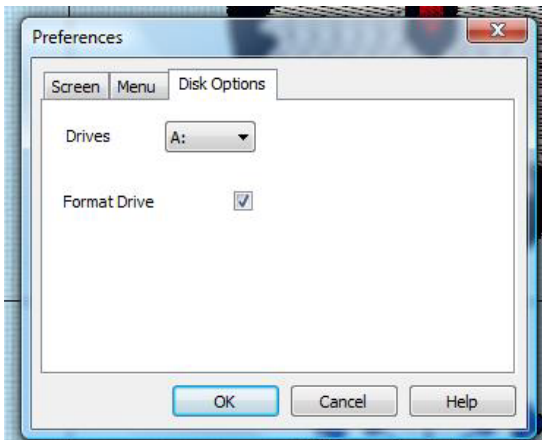
Now, we have 6 designs on the screen. If we want more in that menu, do the same thing and the spaces will automatically expand. But as I stated before, don't put more than 9 designs in a menu.

If you want some in menu 2, then click on menu 2 and add some designs to it and then menu 3 and 4 if you like. When you are done, close the door on the bottom left side of the Design view screen.

Once you are done, then insert the disk. Before you write to the disk, let's make sure the program is set to format the floppy before putting these designs on it. Click on "edit and then preference" .



This screen will appear showing the A drive and I checked to format it. Click on OK. You don't have to do that again. It will stay that way unless you change it.



Insert the disk and click on “write to disk” and a pop up will appear telling you “ all embroideries will be deleted from the disk”. Click OK and a format screen will appear. Check “quick format” and click on “start” and close it when it’s done. The disk will be cleaned off but anything on the screen including the ones that were there if you clicked on “read disk” will now be written to the disk.

You will see a green bar moving across the bottom of the screen when it’s writing to the disk.

When it’s done, click the white folder at the top left toolbar to clear the screen. Then click on “read the disk” icon to see what’s on the disk. All the designs in Menu 1 will appear. If you have designs in menu 2, 3 or 4, click on the Plus in front of floppy and click each of those menus to see what’s in them.

*

Designer USB with the USB port using an embroidery stick:

The owners of this machine will use the “USB Stick” menus to put designs in them. Click on the + in front of “stick” and this will open it up to show the menus.

If you have designs on the stick that you want to save, choose the “read the stick” icon first. Any designs on the stick will appear in the menus and those menus will now be orange.

Click on any grey (empty) menu and do the same thing as I explained above about finding the designs in various folders to get them on the screen.

When you are done selecting, then click on “write to stick”.

Refer to my tips under the Designer SE category for more tips on using the Disk Manager.