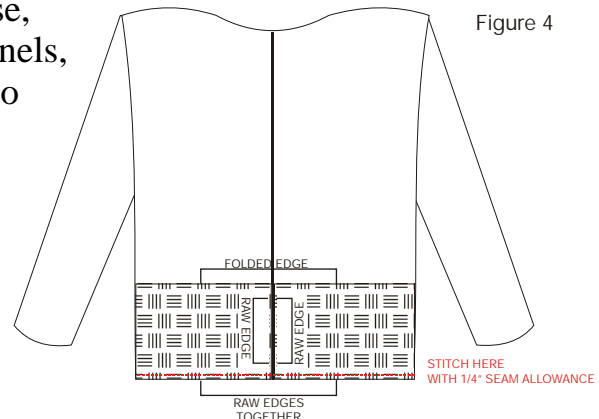
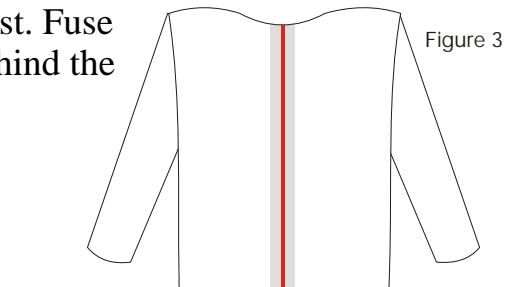
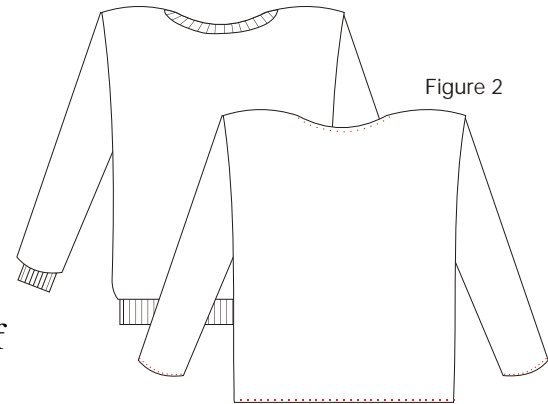
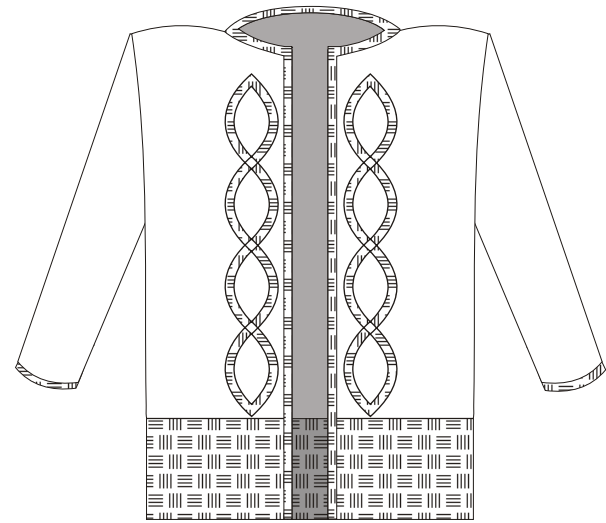


STAINED GLASS SWEATSHIRT

- SUPPLIES:**
- Prewashed Crewneck Sweatshirt
 - 1-1/2 to 2 yds Prewashed Cotton Print Fabric
 - Thread to Match
 - Fusible Interfacing, about 2" wide x length of sweatshirt
 - Chalk or Water Soluble Marker
 - Sharp Applique or Curved Nose Embroidery Scissors
 - Collins Wonder Tape or Safety Pins
 - Measuring Tape
 - Edge Joining Foot (optional)
 - Tracing Paper & Tracing Wheel (optional)



All seam allowances are 1/4", unless noted otherwise

1. Stay stitch around the collar, cuffs, and waistband, about 1/8" above where the ribbing has been topstitched. Cut off the ribbing at collar, waist, and cuffs. Figure 2.
2. Draw a line down the center of the shirt, from neck to waist. Fuse the interfacing strip to the wrong side of the sweatshirt behind the line drawn. Figure 3.
3. Cut the shirt front apart from neck to waist, along the line drawn in Step 2.
4. Cut one (or two, depending on fabric width and sweatshirt size) panel of fabric on the crosswise grain. 10" wide by the circumference of the shirt waist. Fold in half lengthwise, wrong sides together and press. If you have cut two panels, stitch together someplace other than the exact center, so your seam will be less obvious.
5. Lay the panel on top of the shirt waist, matching raw edges. Sew together, using an overlock stitch (or use your serger). Figure 4.
6. Turn down new jacket bottom and press seam allowance toward fabric panel. Figure 5.
7. For the front facings, cut 2 more panels on the crosswise grain and on the fold, 4-1/2" wide by the length of the sweatshirt plus 5

inches for the panel you just added to the bottom. With right sides together, press. Stitch across one long edge. Mark a 45 degree angle on the short side without a fold, from the seam you just stitched to the raw edge. Stitch along this line. Repeat for the other panel, mirroring the angle. Figure 6. Trim to a 1/4" seam allowance along the angle. Press open all seam allowances, clip corners, and turn right side out and press flat.

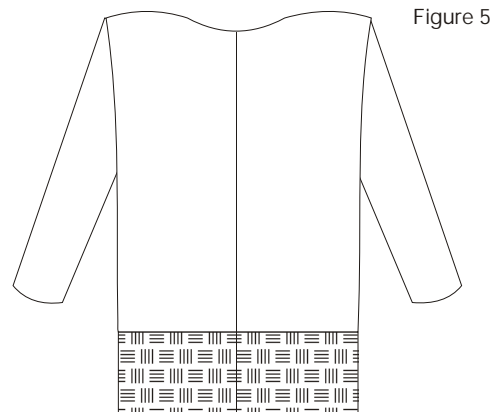


Figure 5

8. Match jacket wrong side to facing right side, raw edges together. Pin or baste in place with folded edge toward the top and the angle edge at the bottom with points toward the middle. Figure 7.

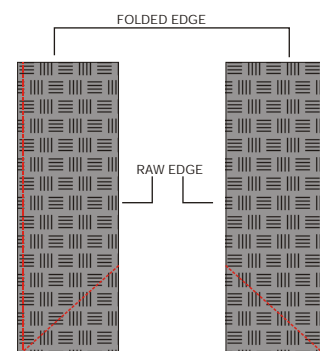


Figure 6

9. Measure starting from one bottom edge, up around neckline and back down the other side of the jacket to the other bottom edge. Add to this measurement the length needed to bind the 2 cuffs, and also add an additional 5 inches for turned under edges and "fudging." Prepare 2-1/2" self-bias in one continuous strip to match the total measurements you just calculated. See <http://www.quiltersnewsletter.com/quilts/lessons/qltfund4.htm> for instructions on making continuous self-bias. You should start with a 20-inch square piece of fabric for this project.

Press open the seams of your continuous bias and clip the "dog ears." Fold in half lengthwise, wrong sides together. Press.

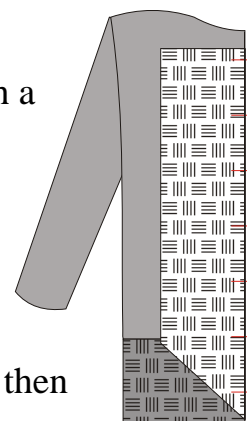


Figure 7

10. Cut one length of bias the length you measured going around the jacket fronts and neckline, plus 1 inch. Press each end under 1/4" then another 1/4" to enclose raw ends.

11. Match raw edges of bias with raw edges of jacket and pin to jacket right side. Be sure that your pinning also includes the facing underneath. You should end up with a "sandwich" of bias on top, jacket in the middle, and facing on the bottom, all raw edges together. Figure 8.

12. Stitch the bias to the jacket and facing, a scant 1/4" from the raw edge. Figure 9.

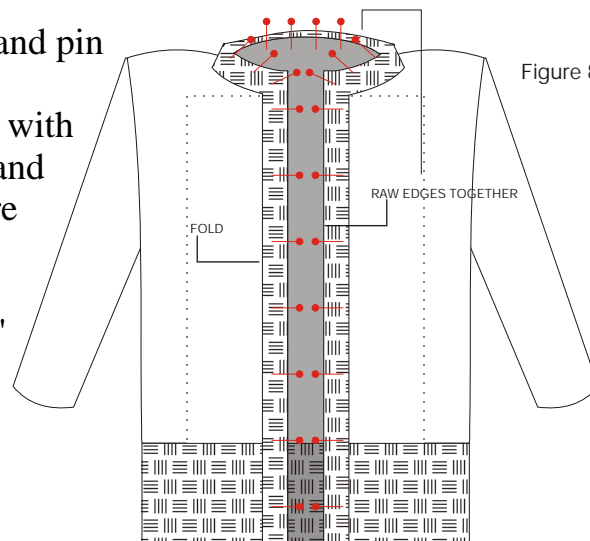


Figure 8

13. Fold bias on top of itself to the underside of the jacket. On the underside of the jacket, the bias edge should cover the line of stitching you just made. Pin in place. Stitch “in the ditch” from the top side of the jacket to attach the binding to the inside of the jacket. Use your edge joining foot to make stitching in the ditch easier. Figure 10.

14. Bind the jacket cuffs using the same method. You may wish to create an inverted pleat at the cuff to make the wrist opening a bit smaller. Do this before binding.

15. Use Wonder Tape to baste the unstitched facing edge to the inside of the jacket so that it will stay out of the way while you’re stitching the stained glass design. If you don’t have Wonder Tape, use a couple of safety pins.

16. Trace the stained glass design onto the jacket fronts, about 1/4" to 1/2" from the binding, making sure design is balanced across each jacket front. If you do not have tracing paper and wheel, pin or use spray adhesive to secure the paper in place and stitch over the paper in the next step.

17. Using a narrow satin stitch, stitch the designs onto the jacket starting at the top and following each line of the design to the bottom as one continuous line. Repeat for the other 3 lines of the design. Tear away the paper if you used the paper method. Figure 11.

18. Using applique or curved embroidery scissors, cut away the sweatshirt inside the design, **BEING CAREFUL NOT TO CUT THE FABRIC PANEL UNDERNEATH.** It is best not to cut away the sweatshirt where the design lines intersect and form a little diamond. Figure 12.

There are many quilting border patterns that will also work for this project. Next time you’re in your favorite fabric store, see what’s available.

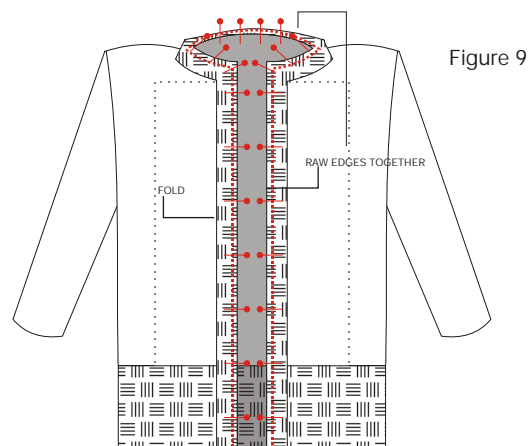


Figure 9

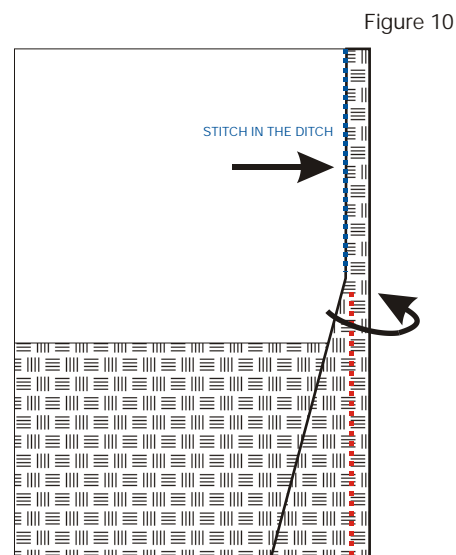


Figure 10

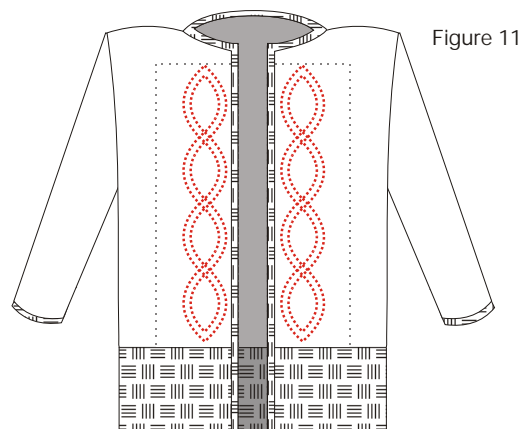


Figure 11

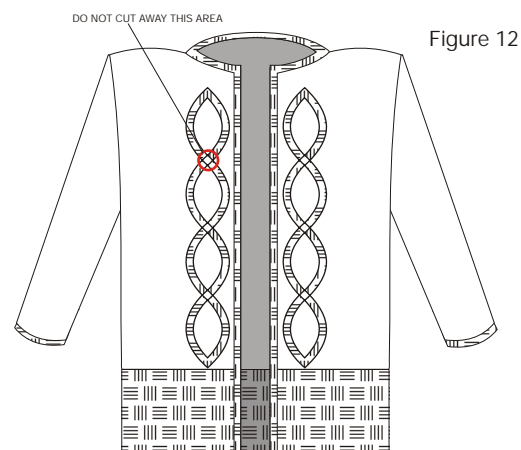


Figure 12

