

## Redwork T Towel with picot edging

By *Janice Henning*



### Supplies

**Linen or linen blend of fabric 1/3<sup>rd</sup> yd.**

2 prewound bobbins ( use these for heirloom sewing because the thread is fine)

Spool of 12Wt thread and also a bobbin wound with this thread

Stitch n Ditch stabilizer 8" wide

Wing needle

90 embroidery needle

80 sewing needle

J foot

Embroidery unit and R foot

100 X 100 hoop

Redwork design on disk or stick or card

Water soluble marking Pen (blue)

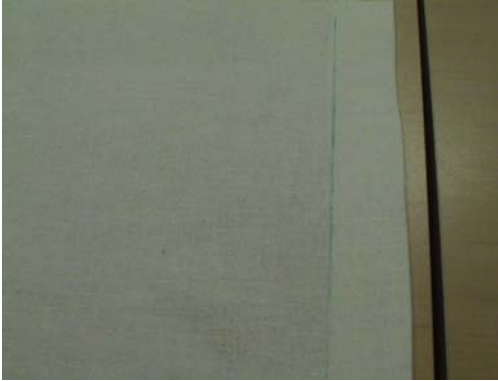
Cut the fabric with a rotary cutter to have nice sharp raw edges. Cut the tea towel 14 X 25

Spray the cloth with spray starch, fold up and let it soak in and then use a hot dry iron to press it.

OR heavily starch the fabric and smooth it out flat on the shiny side of "freezer paper" (protects table) and let it dry overnight.

**Fold one end under 1 ¼" and press . Fold under the other end ¾".**

On the **right** side of the fabric, use a rule to draw a line using a water soluble marking pen to show exactly where the raw edge of the hem is located.



**Attach the clear B foot and insert the wing needle.**

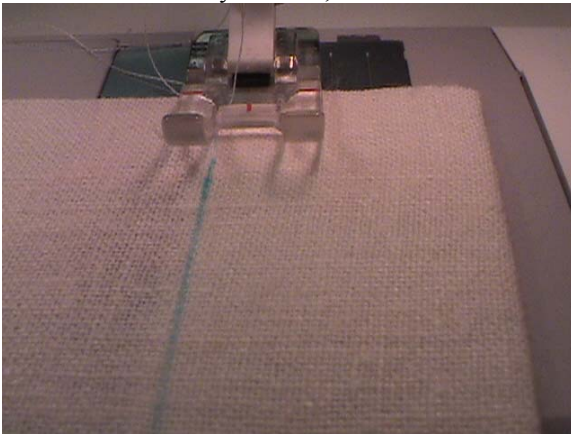
**Use the embroidery bobbin thread on top and in the bobbin area.**

**Touch the heirloom menu and choose the “entredeux” stitch (D7 on the 1+, D1, DSE).**

### **Stitching the entredeux stitch for the hem:**

Slide the hem area under the foot so that the **inner left side of the foot** will be against that drawn line. Lay a strip of Stitch n Ditch or very lightweight tear away stabilizer under the area where the entredeux will be stitched.

Touch the Pivot button to get a better alignment and then touch the presser foot down button. When you see it is correct. As you stitch, make sure that the line is always against that inner side of the foot.

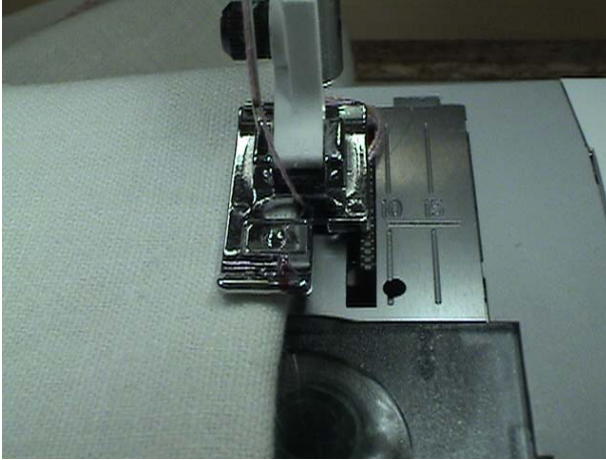


This should encase the raw edge very well, but after turning it over, you may have to do a minor trimming. Stitch the other end the same way.

### **Picot lace edging**

**Thread top with 12 Wt. Sulky and insert the bobbin with the 12 Wt. thread.**

**Insert the 90 embroidery needle and attach the J foot.** I use a permanent thin line marker to make a little red line on the end of the foot that would be even with the straight part of the J that is imprinted on this foot.



Place the folded edge under the foot so that red line will be right on the fold. This will make it so much easier to stitch this picot edge exactly right.

**Touch Menu A and A1.** This stitch will be just inside the fabric fold to tie the stitch and let it stitch one or two stitches after the tie and then **touch the A31 (bridging stitch)** and **touch the “fix” button** to remove that fix stitch because we don't need it.

As you sew, make sure the line on the foot is always right on that folded edge. When you get close to the end, **touch the A1 again** to tie off and take 1 or two stitches into the fabric to secure the stitching.

Do the same thing on the other end.

### **Embroidery design**

Attach the embroidery unit and the R foot.  
Change the needle to a #80 Universal or #75 embroidery.

Insert embroidery bobbin thread in the bobbin case.

Use the wide Stitch n Ditch stabilizer under the fabric and stitch the redwork design. The bottom of the design is 1 ½” from the entedeux stitching and the design should be centered.

Turn the sides of the T towel under ¼” and then ¼” again and stitch with the bobbin weight thread top and bottom.

Spray all the blue markings with water or dip the cloth to rinse out the markings. When dry, spray with Magic Spray sizing and iron it from the back.